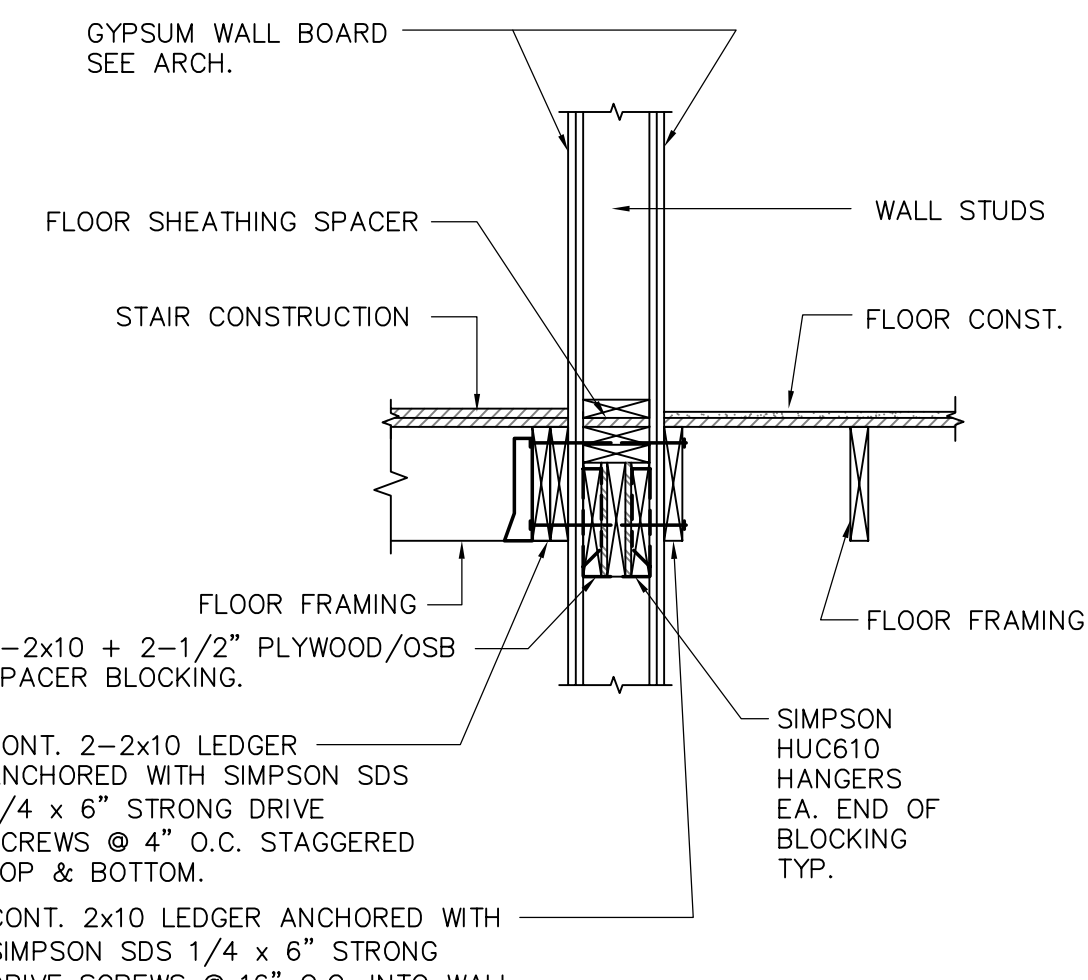
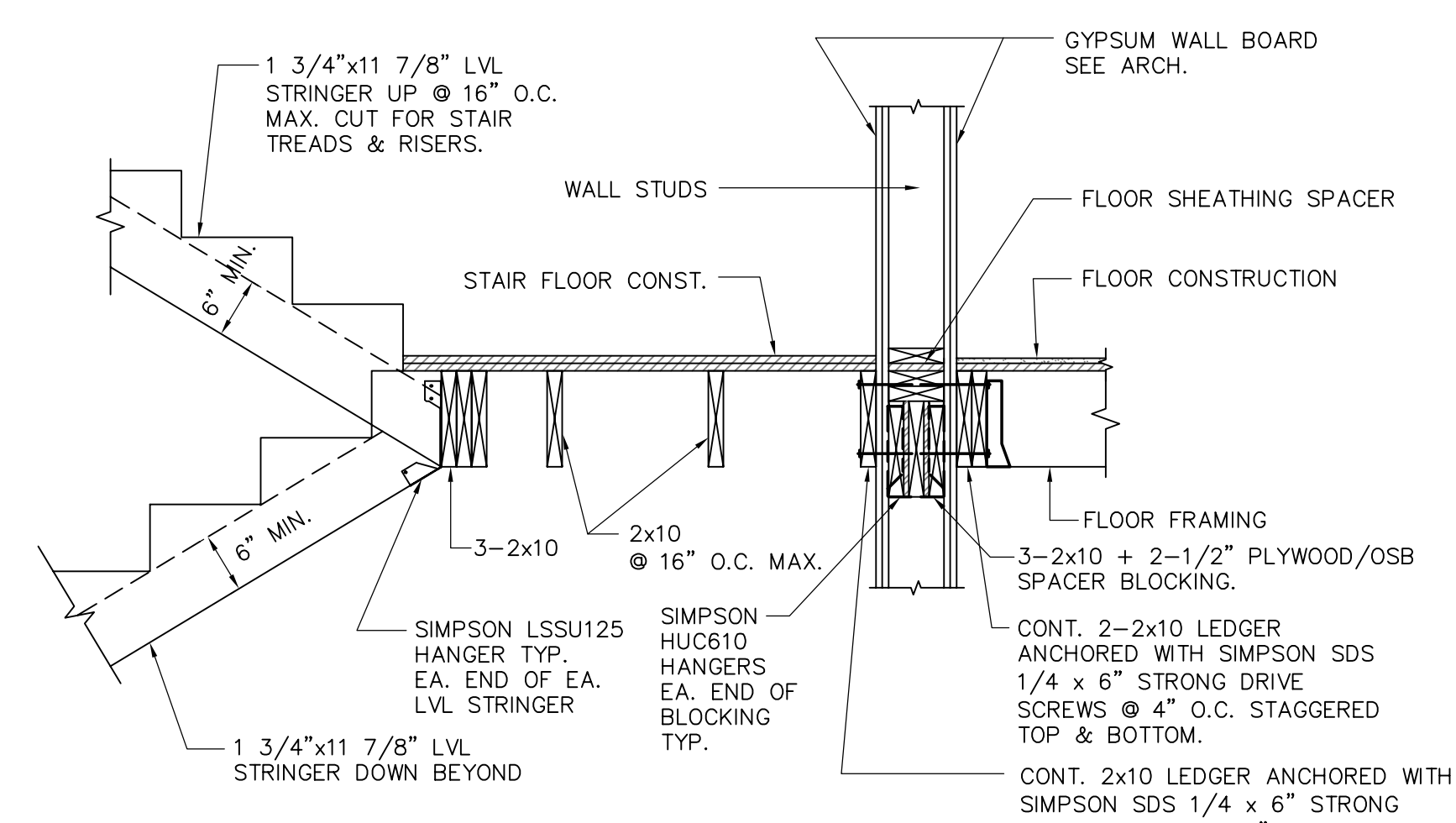


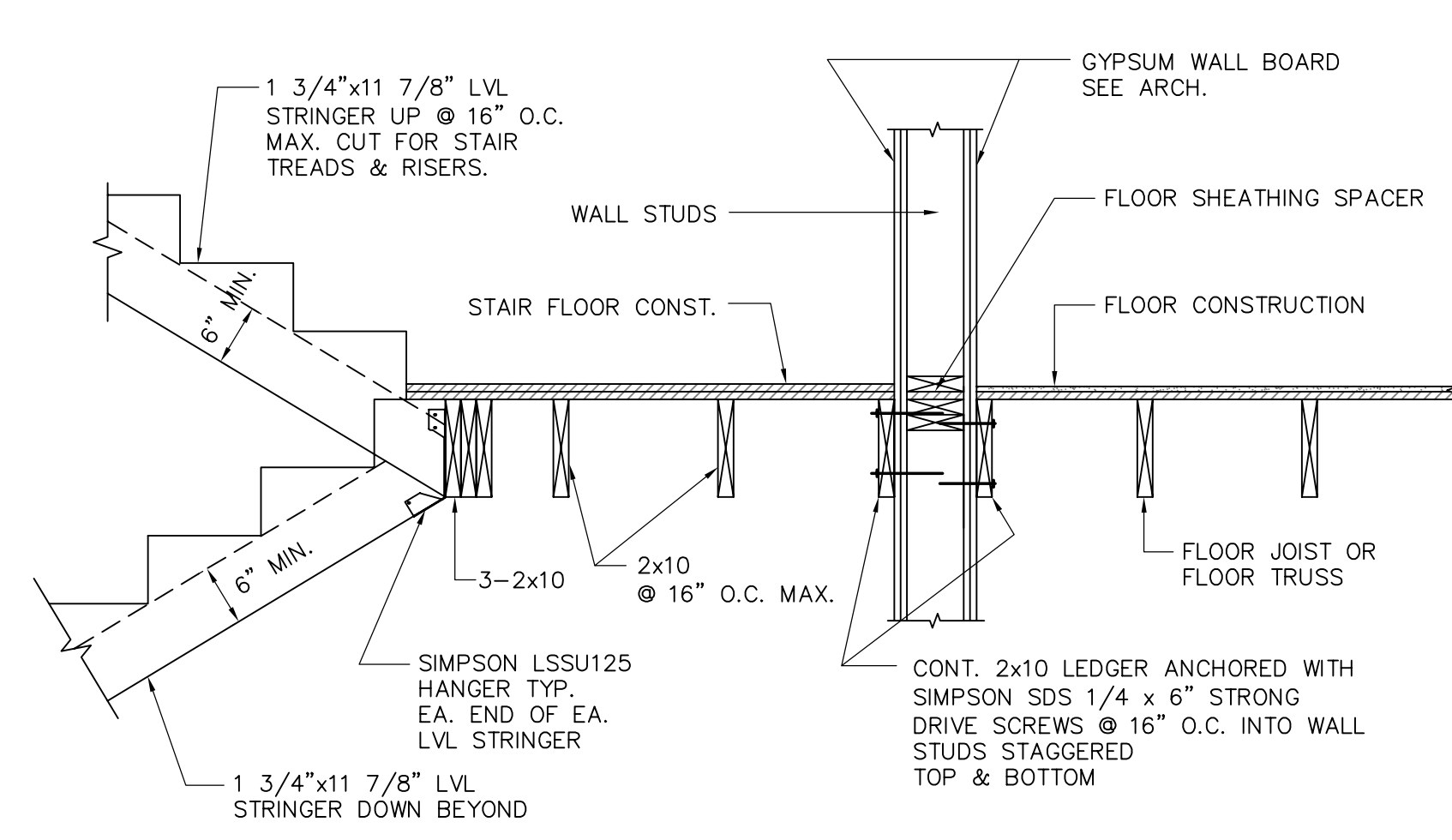
SECTION 1
3/4" = 1'-0"



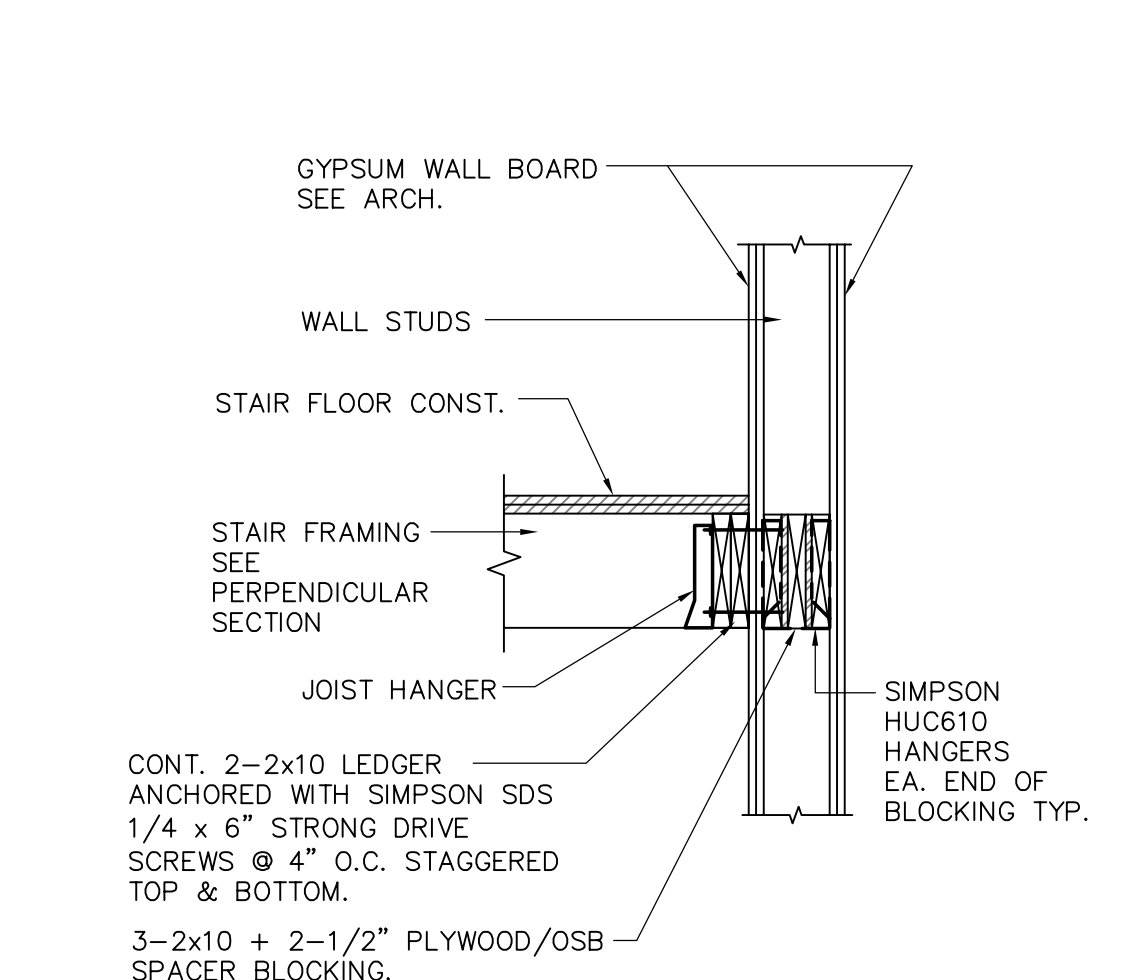
SECTION 2
3/4" = 1'-0"



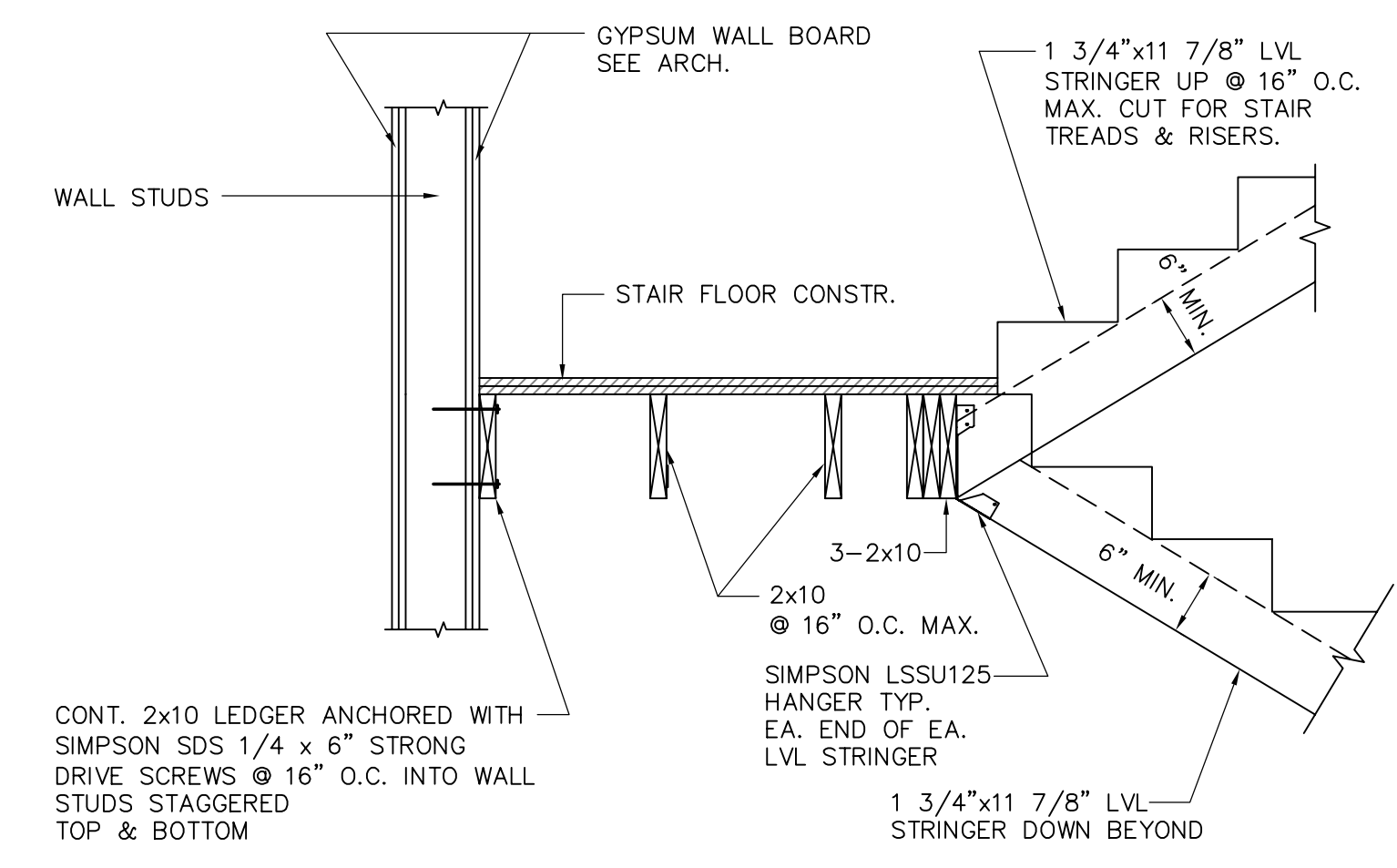
SECTION 3
3/4" = 1'-0"



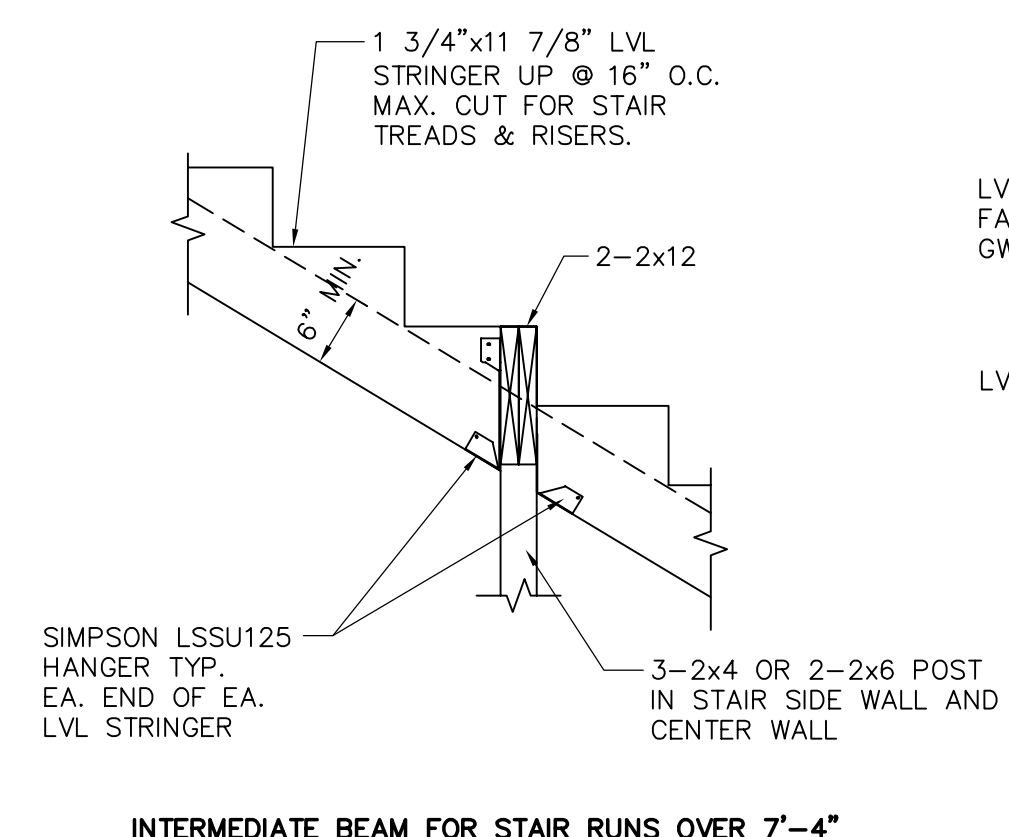
SECTION 4
3/4" = 1'-0"



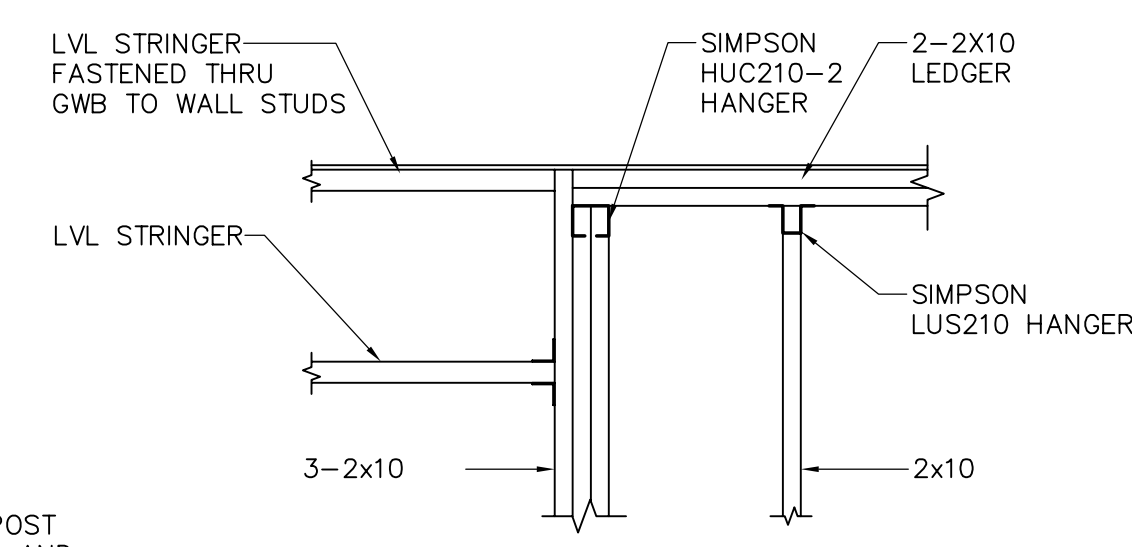
SECTION 5
3/4" = 1'-0"



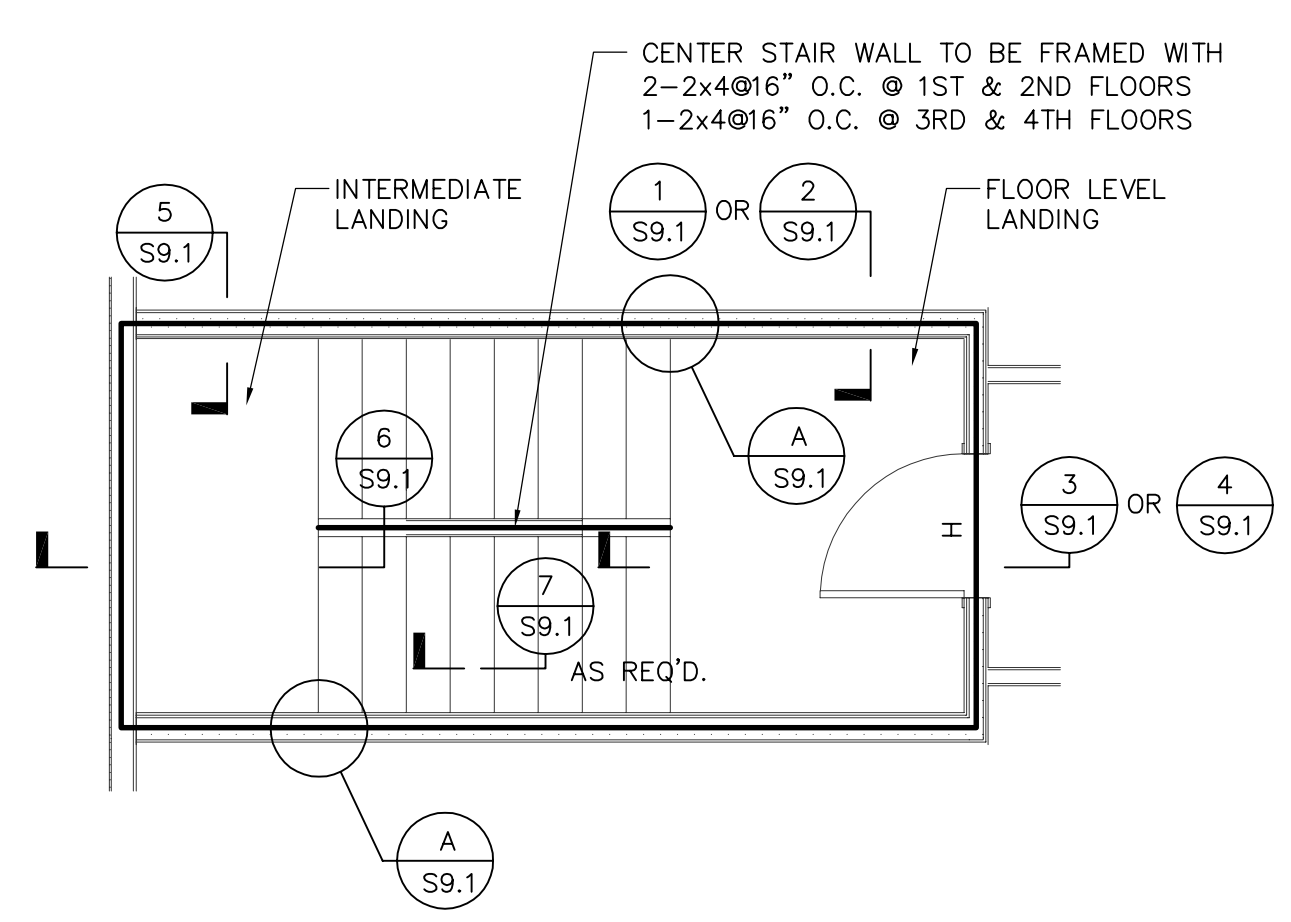
SECTION 6
3/4" = 1'-0"



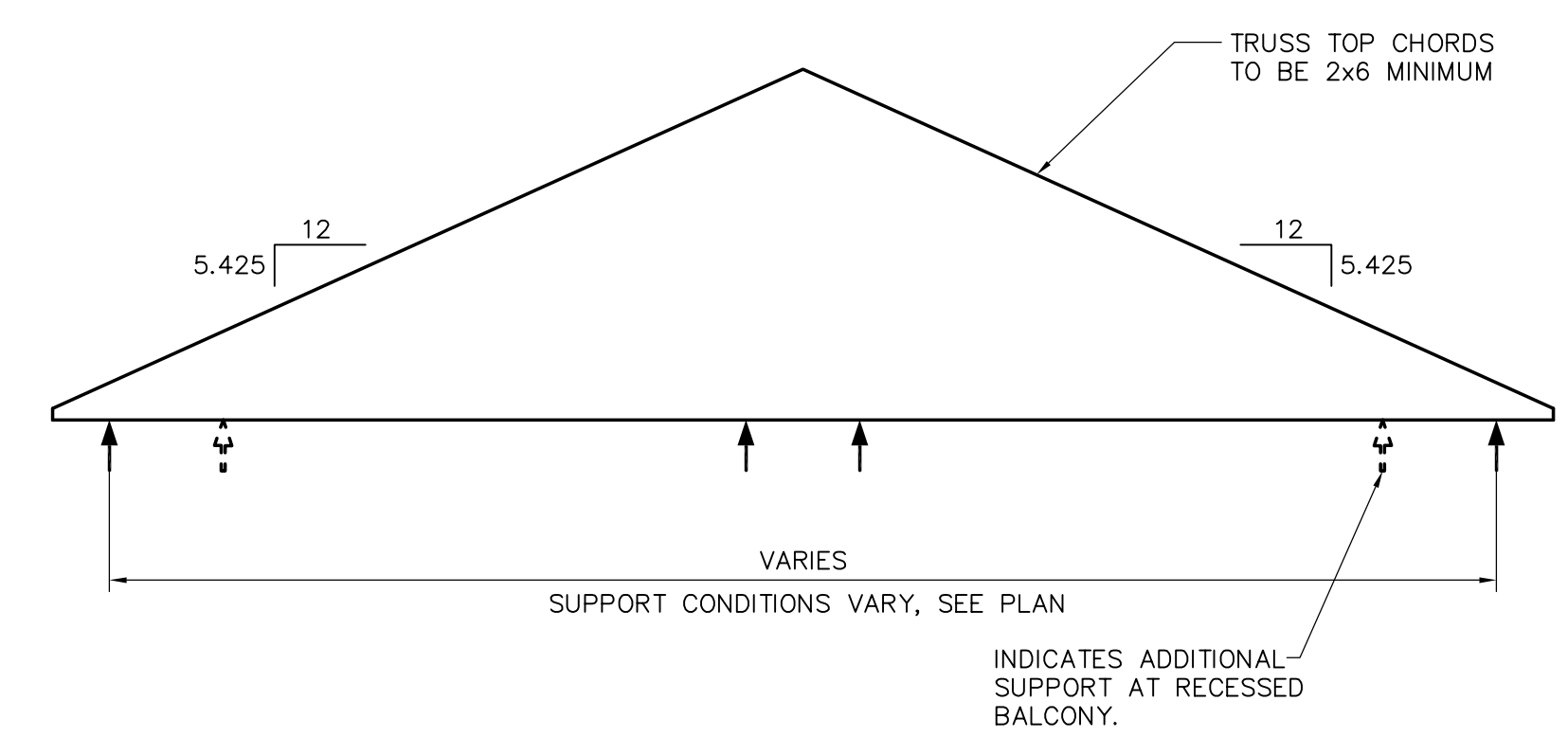
SECTION 7
3/4" = 1'-0"



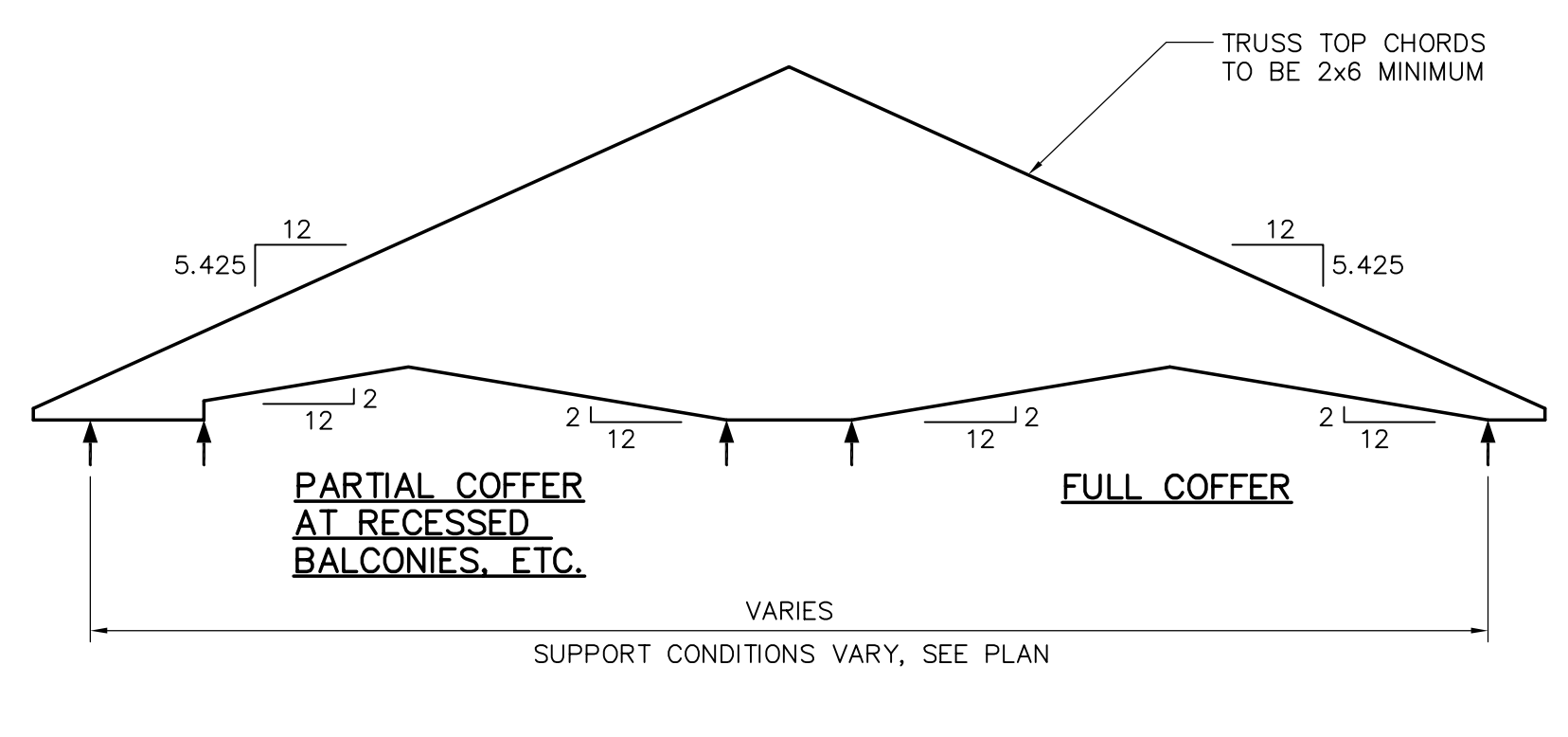
PLAN DETAIL A
3/4" = 1'-0"



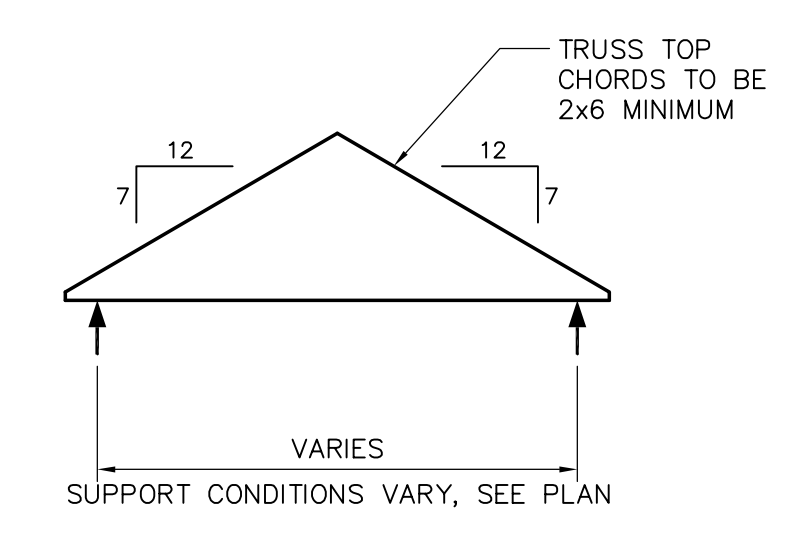
STAIR FRAMING SECTION KEY PLAN
1/4" = 1'-0"



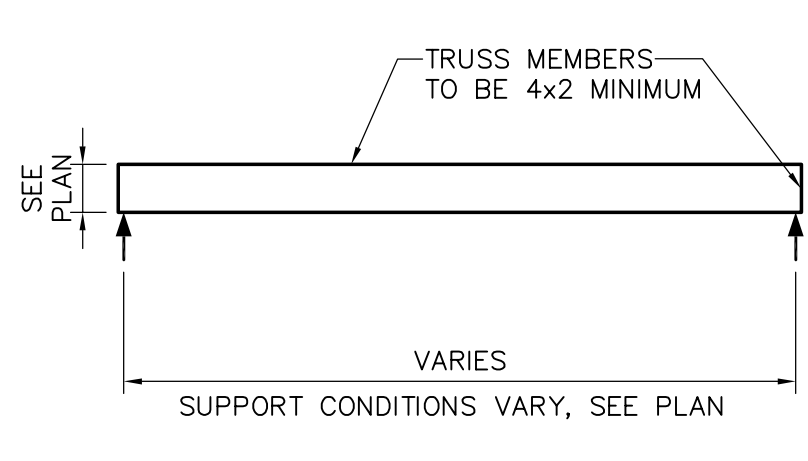
5.425:12 PITCH



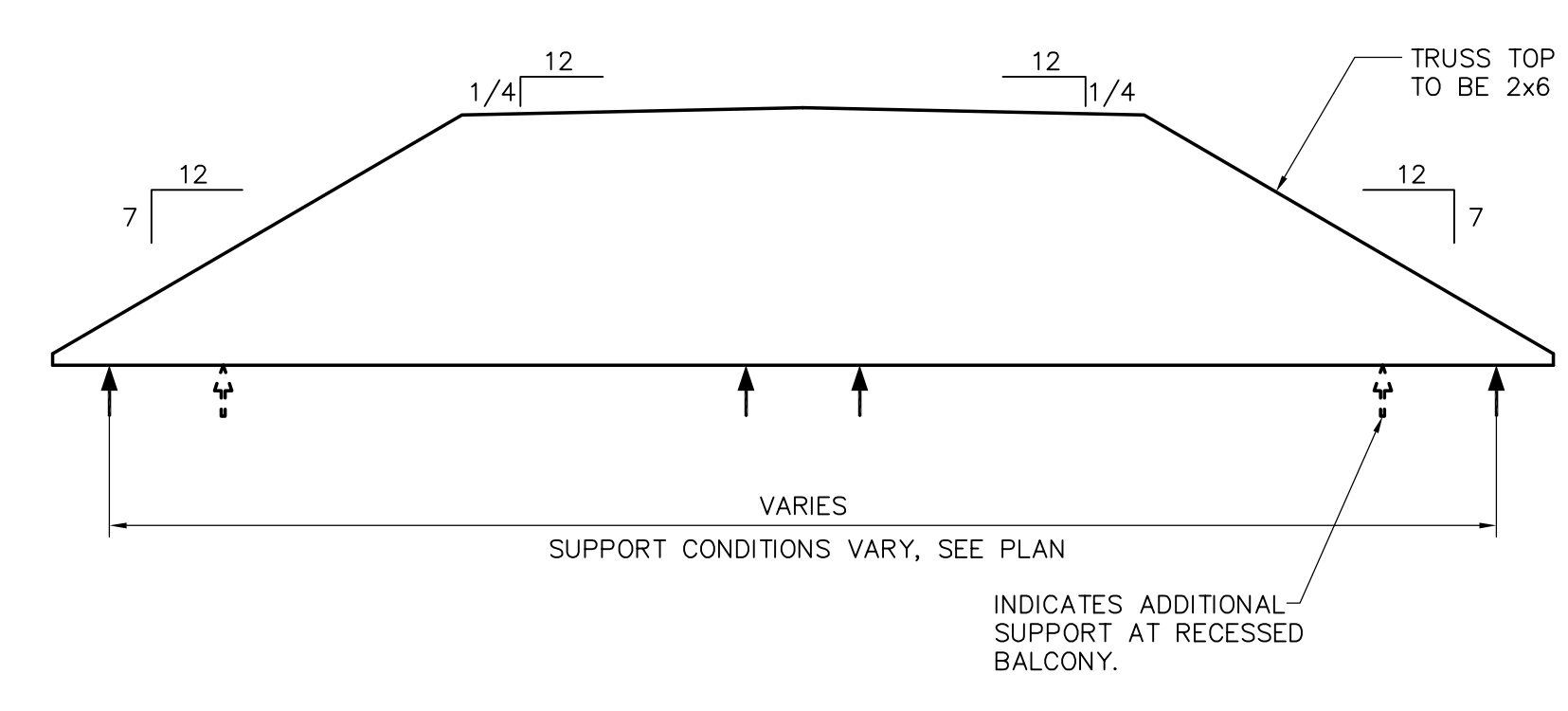
5.425:12 PITCH



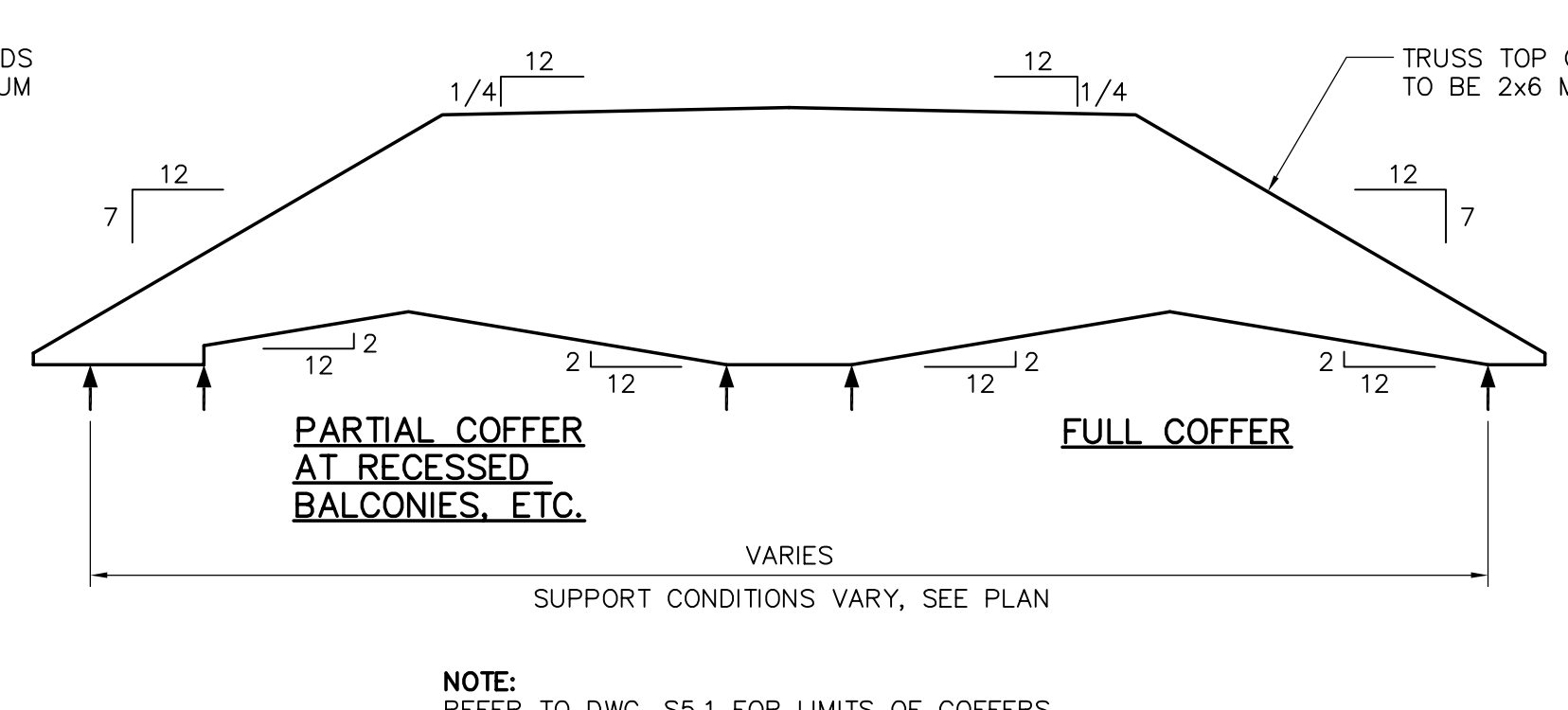
TYPICAL GABLE ROOF TRUSSES



TYPICAL FLOOR TRUSS



7:12 PITCH



7:12 PITCH

NOTE: REFER TO DWG. S5.1 FOR LIMITS OF COFFERS.

MAIN ROOF TRUSSES

MAIN ROOF TRUSSES WITH COFFERED CEILINGS

- TRUSS NOTES:**
- REFER TO ARCHITECTURAL DRAWINGS FOR ADDITIONAL INFORMATION AND DIMENSIONS.
 - COORDINATE WITH ALL CONTRACT DOCUMENTS.
 - REFER TO THE GENERAL NOTES FOR DEFLECTION CRITERIA.
 - SPLICING OF TRUSSES FOR SHIPPING, HANDLING, ERECTION HAS TO BE LIMITED TO TWO PIECES. CLEARLY DEFINE THE REQUIRED SPLICING ON THE WOOD TRUSS ERECTION DRAWINGS, NOT JUST ON THE INDIVIDUAL WOOD TRUSS DRAWINGS.
 - DESIGN AND INSTALLATION OF BRACING OF INDIVIDUAL TRUSS MEMBERS (CHORDS AND WEBS) FOR SLENDERNESS EFFECTS IS STRICTLY THE RESPONSIBILITY OF THE WOOD TRUSS ENGINEER, MANUFACTURER AND INSTALLER. THESE BRACING REQUIREMENTS (MEMBER AND CONNECTION SPECIFICATIONS) SHALL BE CLEARLY DEFINED ON THE WOOD TRUSS ERECTION DRAWINGS, NOT JUST ON THE INDIVIDUAL WOOD TRUSS DRAWINGS.
 - DESIGN AND INSTALLATION OF ALL TRUSS TO TRUSS CONNECTIONS INCLUDING BUT NOT LIMITED TO HANGERS AND UPLIFT ANCHORS IS STRICTLY THE RESPONSIBILITY OF THE WOOD TRUSS ENGINEER, MANUFACTURER AND INSTALLER. THE CONNECTION REQUIREMENTS SHALL BE CLEARLY DEFINED ON THE WOOD TRUSS ERECTION DRAWINGS, NOT JUST ON THE INDIVIDUAL WOOD TRUSS DRAWINGS.
- LOADING NOTES:**
- CONSIDER A SUPERIMPOSED DEAD LOAD IN ACCORDANCE WITH THE GENERAL NOTES.
 - CONSIDER ATTIC LIVE LOAD AS REQUIRED BY THE GOVERNING BUILDING CODE.
 - CONSIDER SNOW LOAD AS REQUIRED BY THE GOVERNING BUILDING CODE, APPLIED AT TOP CHORD, WITH ADDITIONAL APPROPRIATE DRIFTING AND SLIDING SNOW LOAD.
 - CONSIDER FLOOR LIVE LOAD IN ACCORDANCE WITH THE GENERAL NOTES.
 - IN ADDITION TO THE ABOVE NOTED DEAD AND LIVE LOAD THE ROOF TRUSSES SHALL BE DESIGNED IN ACCORDANCE WITH THE GOVERNING BUILDING CODE FOR WIND PRESSURES AND SUCTIONS (INTERNAL AND EXTERNAL) WITH WIND DIRECTIONS PERPENDICULAR AND PARALLEL TO THE RIDGES, WHICHEVER PRODUCES THE WORST CONDITIONS.
 - REFER TO THE GOVERNING BUILDING CODE FOR REQUIRED LOAD CASES AND LOAD COMBINATIONS.