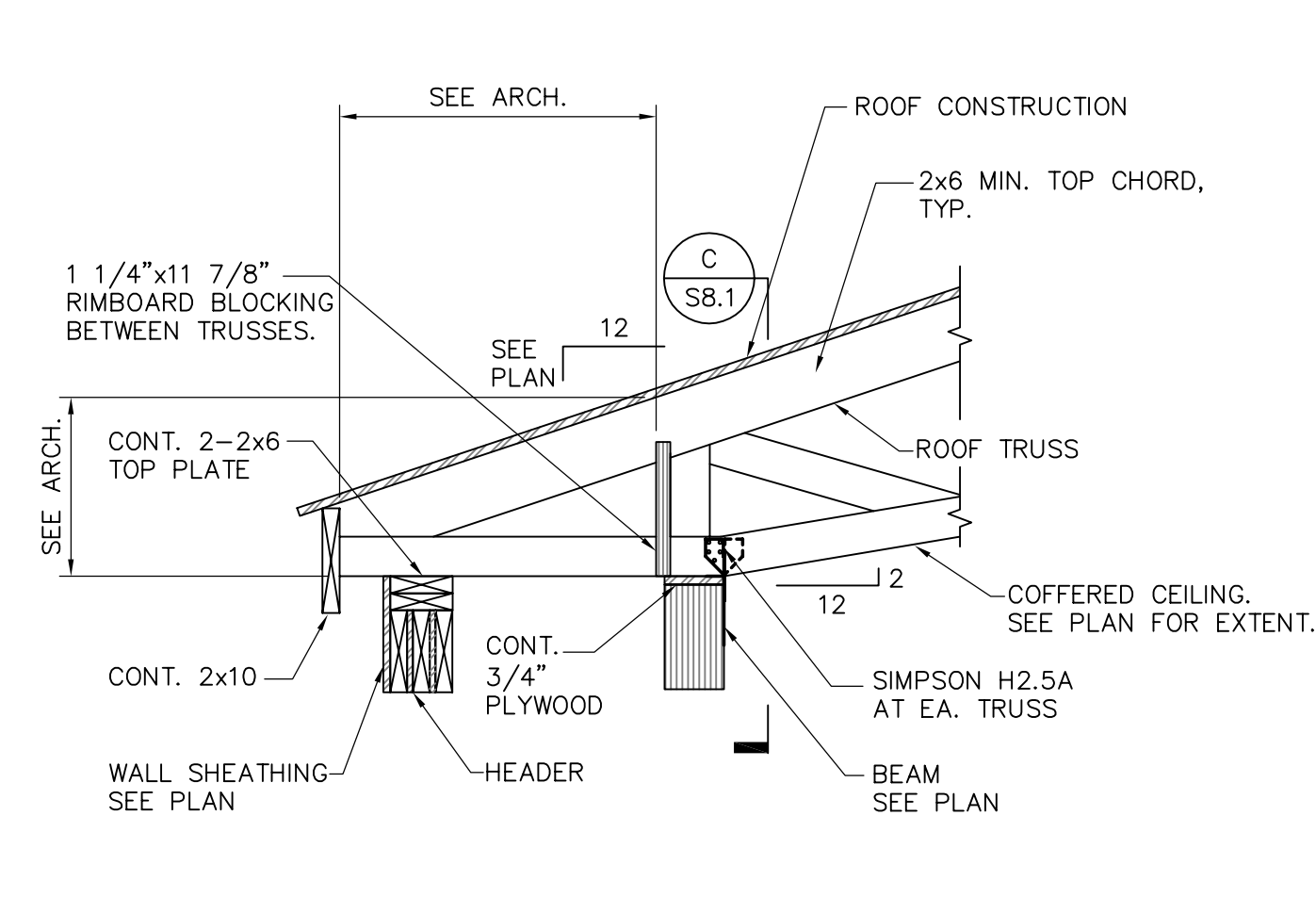
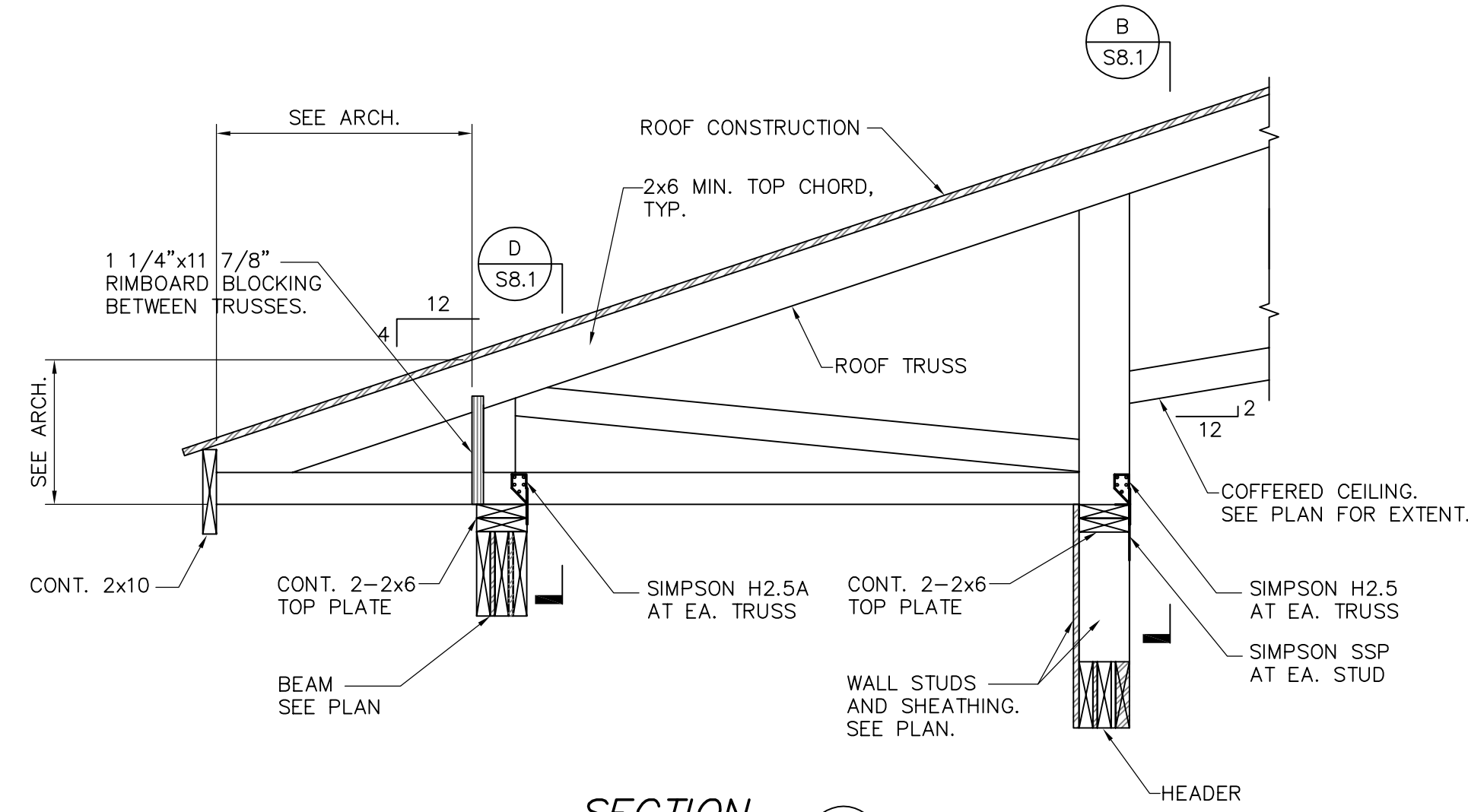


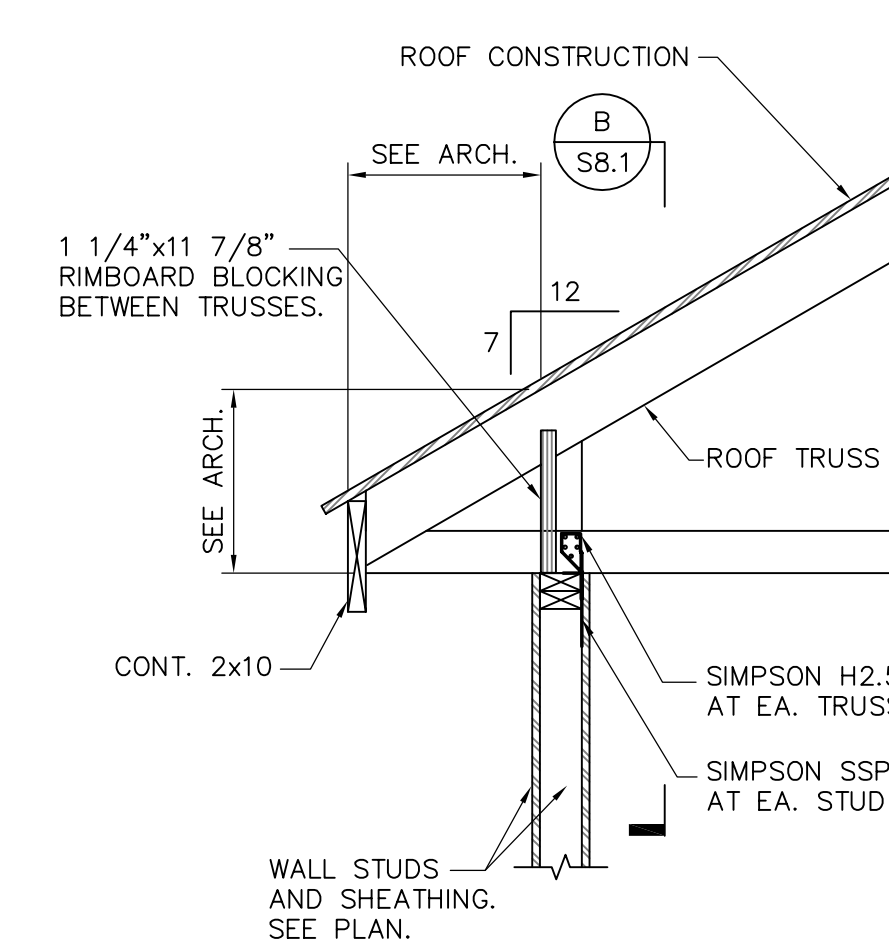
SECTION 1  
3/4" = 1'-0"



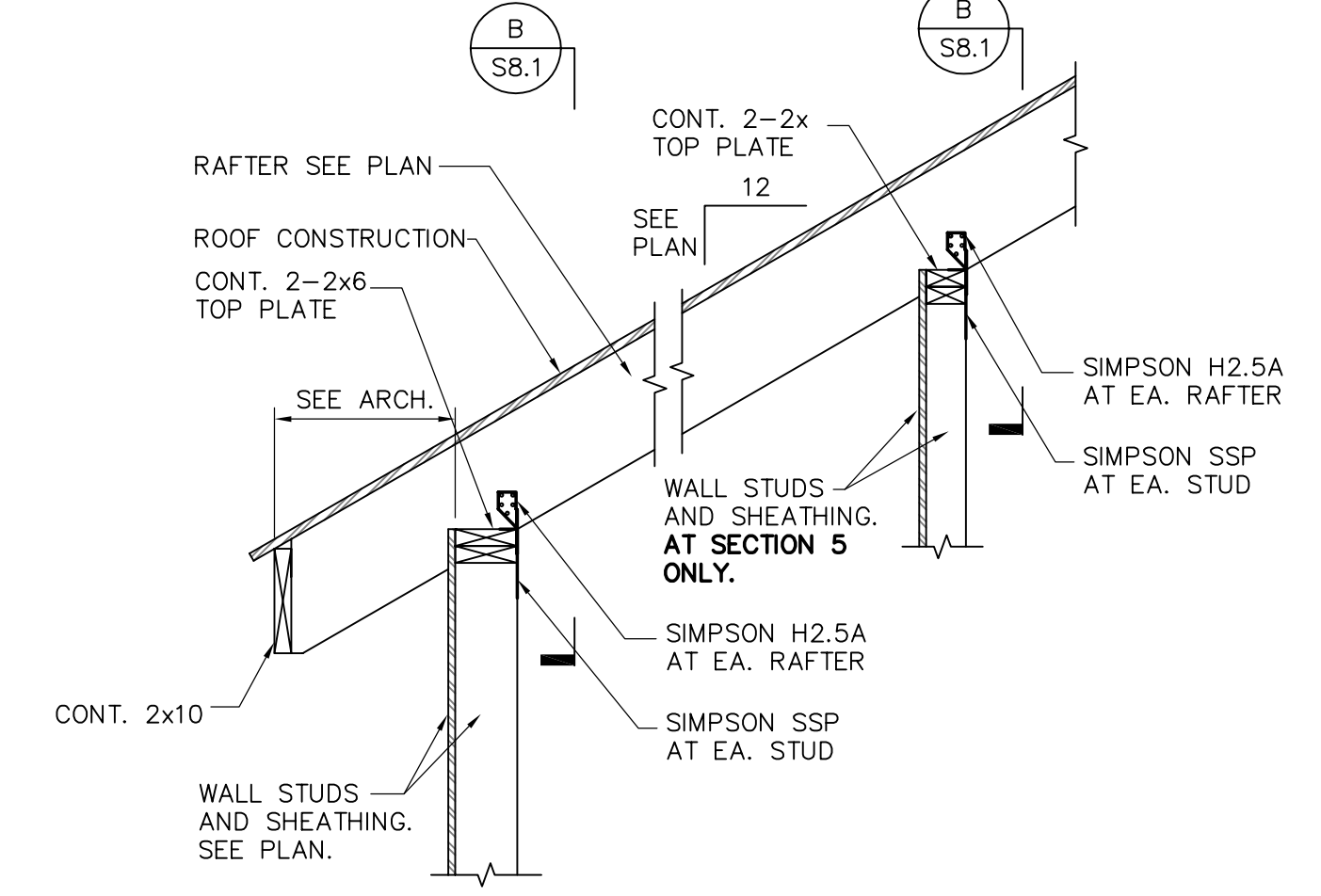
SECTION 2  
3/4" = 1'-0"



SECTION 3  
3/4" = 1'-0"

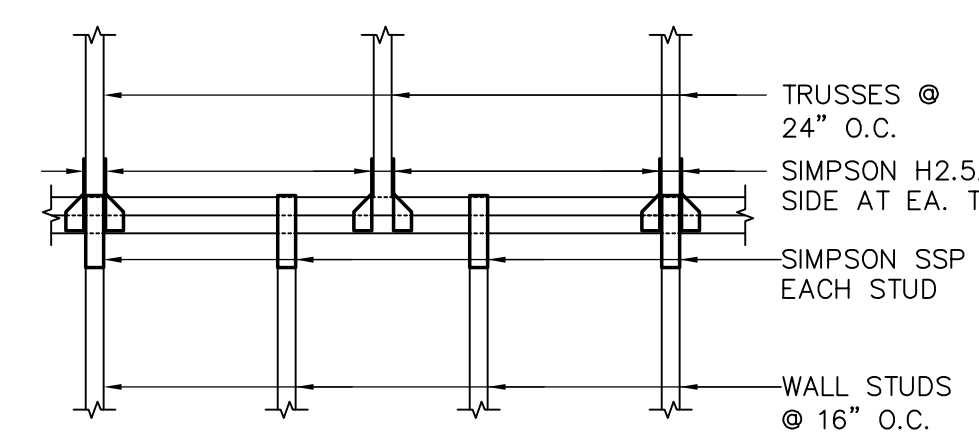


SECTION 4  
3/4" = 1'-0"



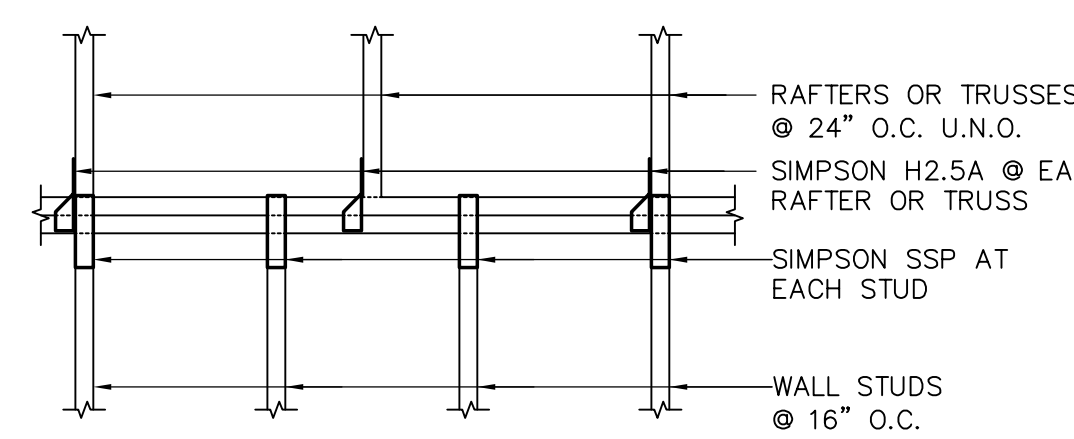
SECTION 5 (5A) (5B)  
3/4" = 1'-0"

- UPLIFT TIE NOTES:**
1. AT 2-PLY TRUSSES, PROVIDE SIMPSON LGT2 TIEDOWN TO A DOUBLE 2x SUPPORT POST.
  2. AT 3-PLY TRUSSES, PROVIDE SIMPSON LGT3-SDS2.5 TIEDOWN TO A TRIPLE 2x SUPPORT POST.
  3. AT HIP MEMBERS, PROVIDE 2-SIMPSON DSP TIES AND SIMPSON HCP2 AT 2x HIPs, SIMPSON HCP4Z AT 3 1/2" LVL HIPs. FOR 2-PLY HIP TRUSSES, PROVIDE USP LGT2C.
  4. COORDINATE WITH TRUSS SUPPLIER FOR CONNECTIONS WHEN UPLIFT IS GREATER THAN CAPACITY OF CONNECTIONS SPECIFIED ABOVE.
  5. FASTEN SSP TIES W/ 10D NAILS.



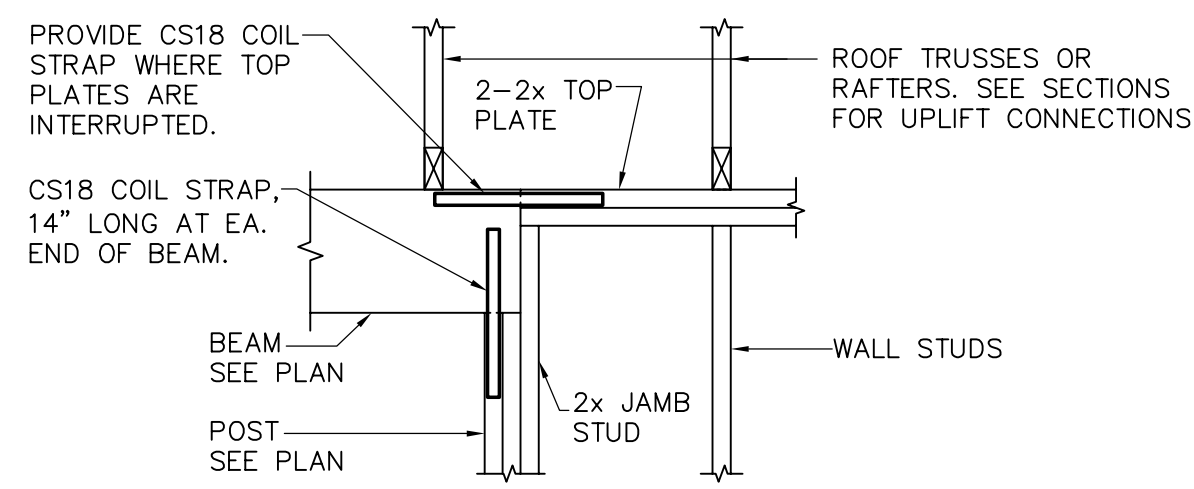
MAIN ROOF TRUSSES EXTERIOR WALL  
ELEVATION OF UPLIFT TIE CONFIGURATION

ELEVATION A  
3/4" = 1'-0"

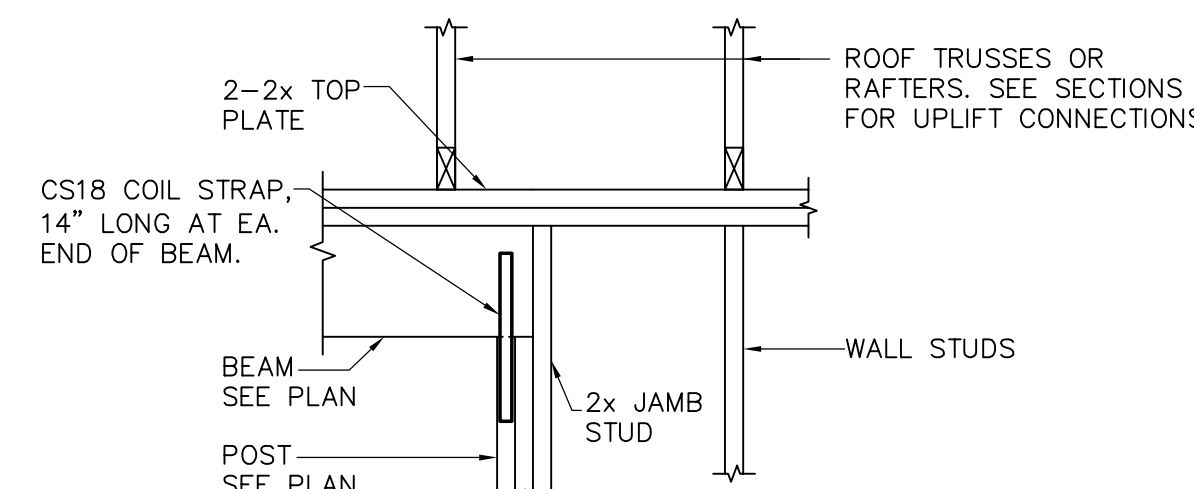


ELEVATION OF TYPICAL UPLIFT TIE CONFIGURATION, U.N.O.

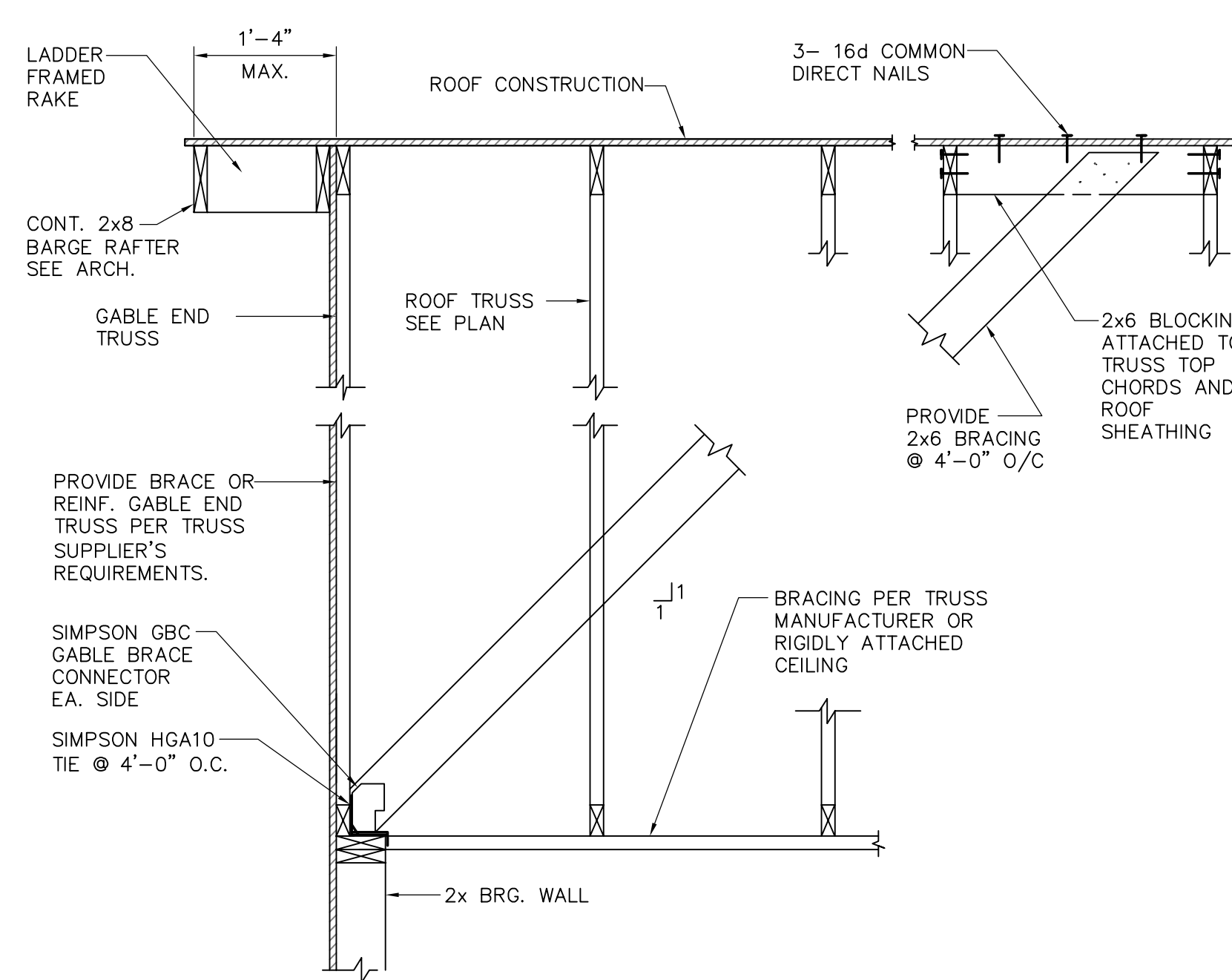
ELEVATION B  
3/4" = 1'-0"



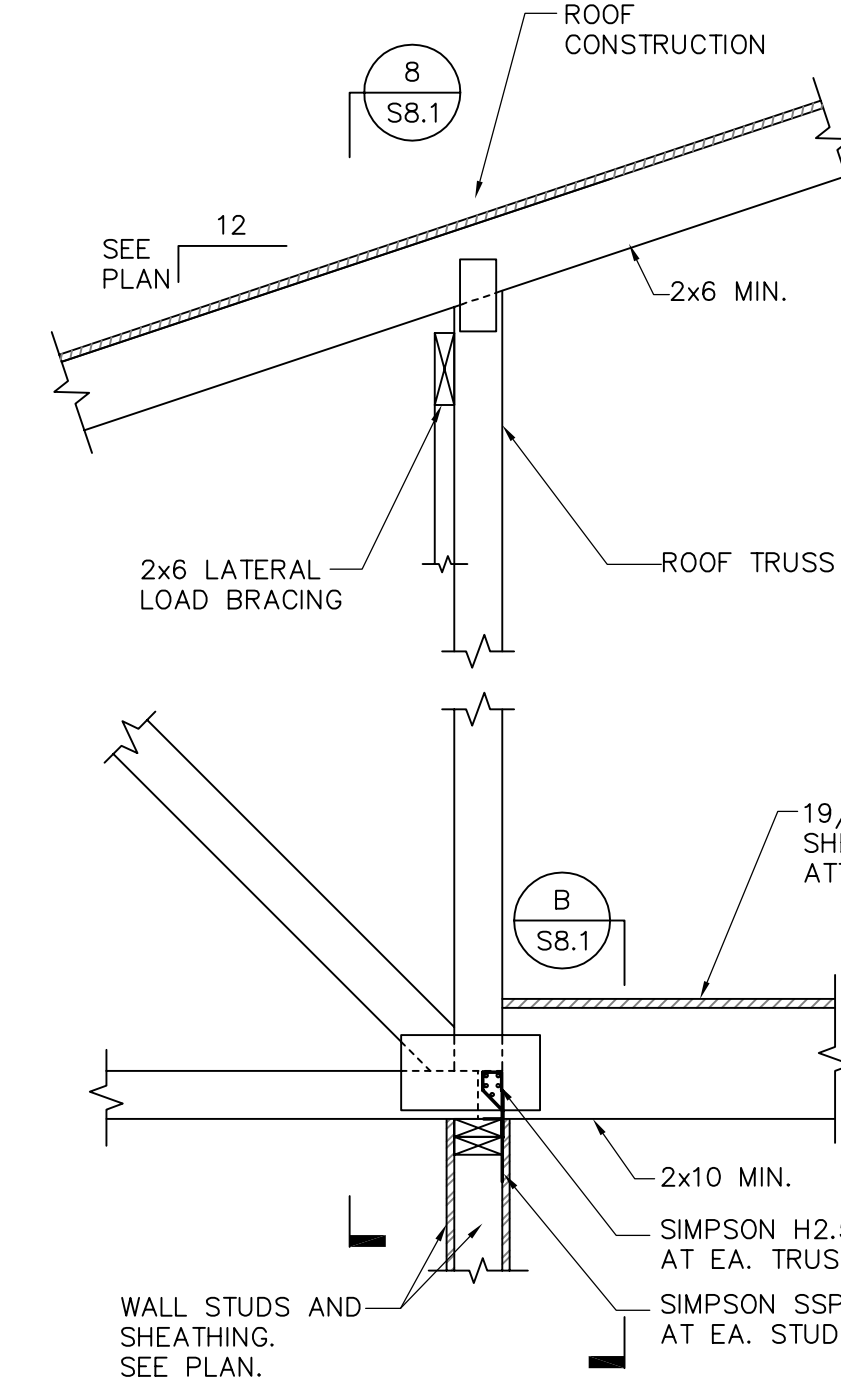
ELEVATION C  
3/4" = 1'-0"



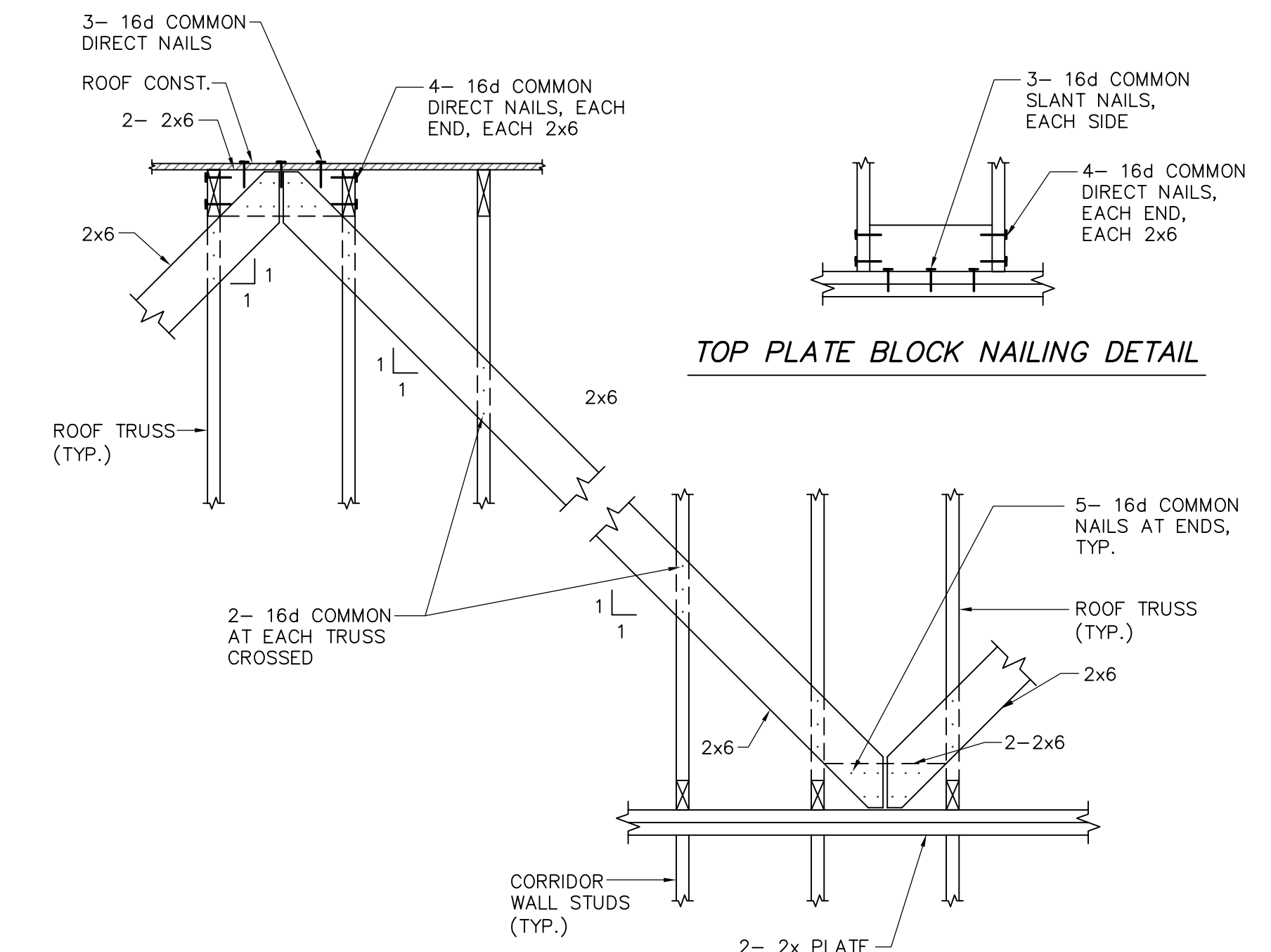
ELEVATION D  
3/4" = 1'-0"



SECTION 6  
3/4" = 1'-0"

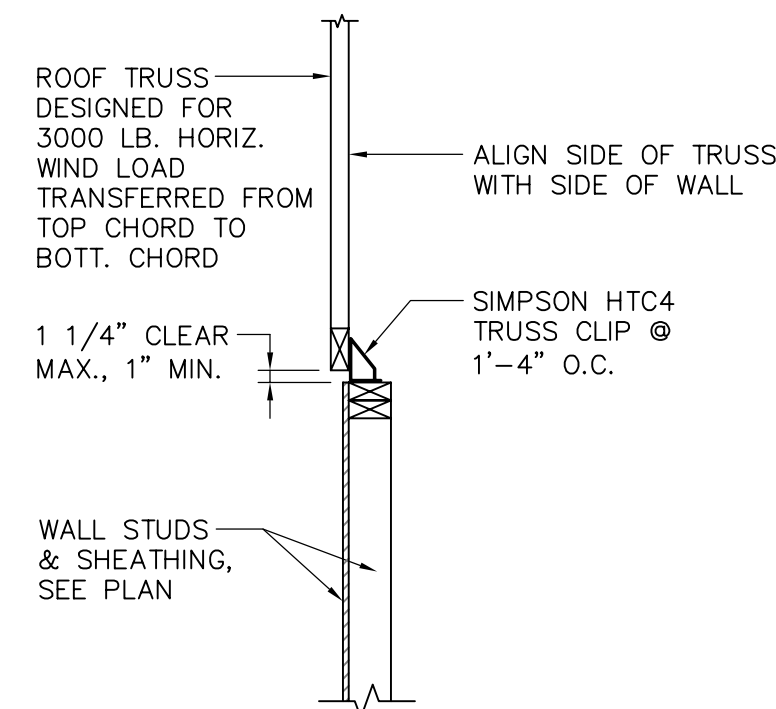


SECTION 7  
3/4" = 1'-0"

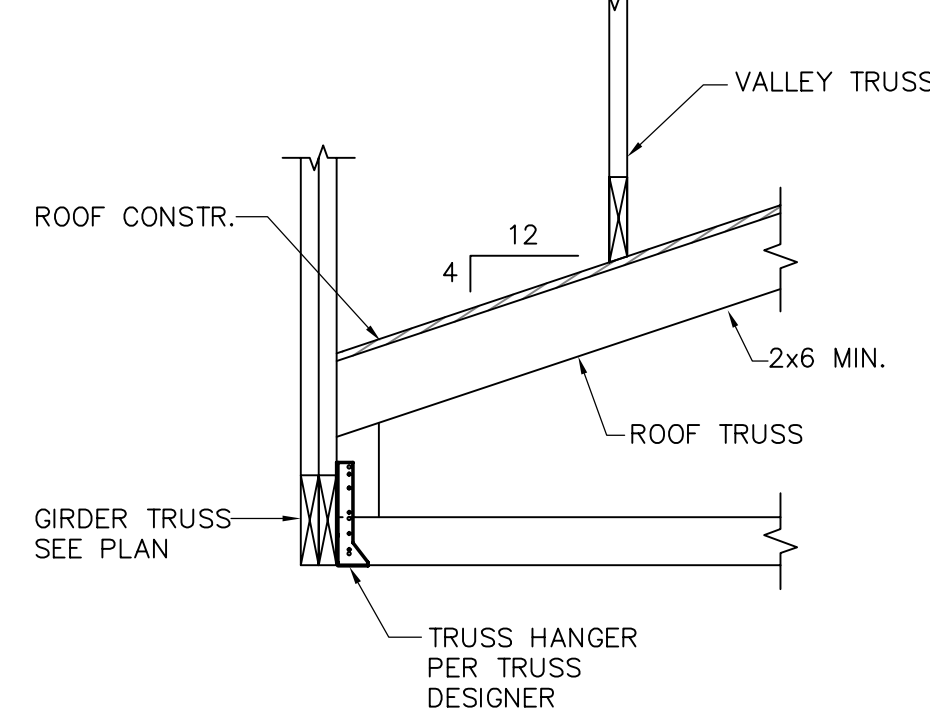


LATERAL LOAD BRACING AT ROOF

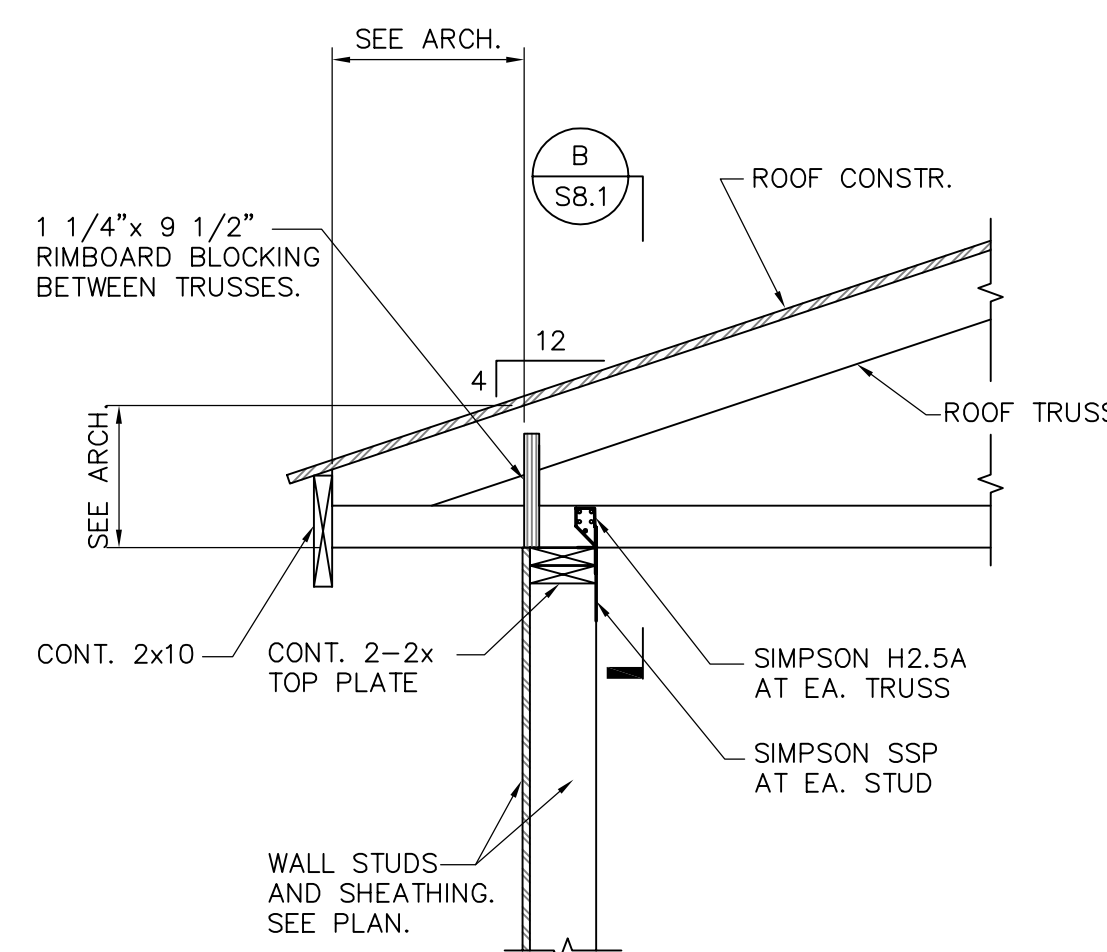
SECTION 8  
3/4" = 1'-0"



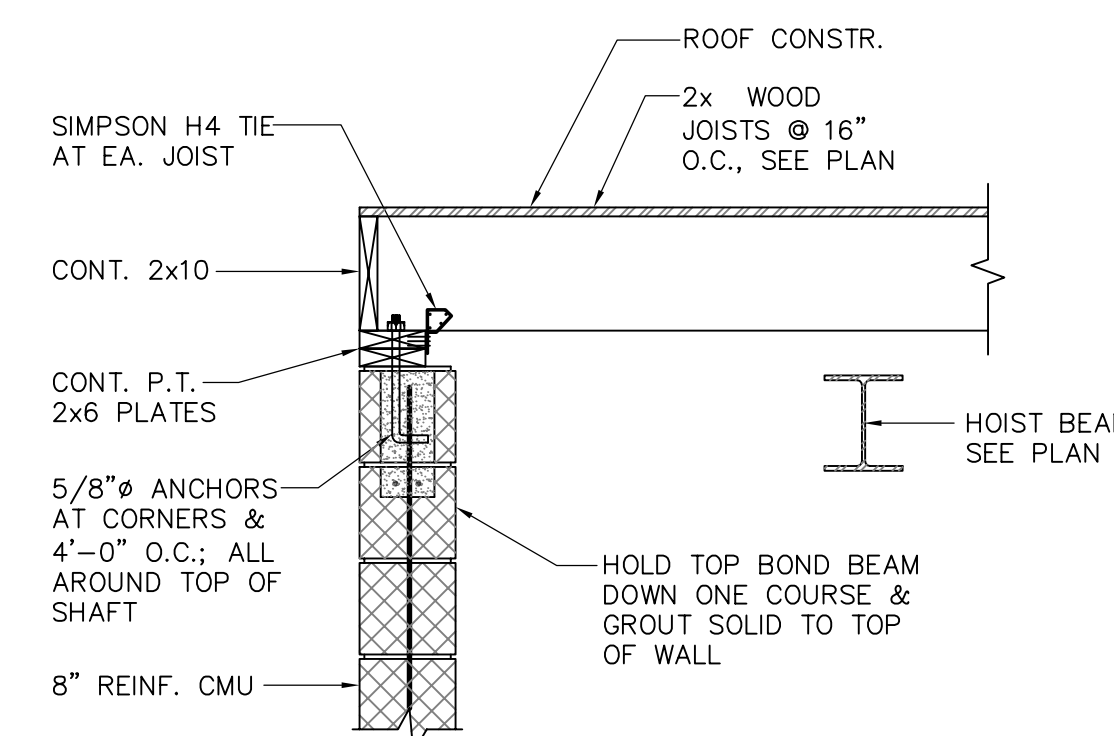
SECTION 9  
3/4" = 1'-0"



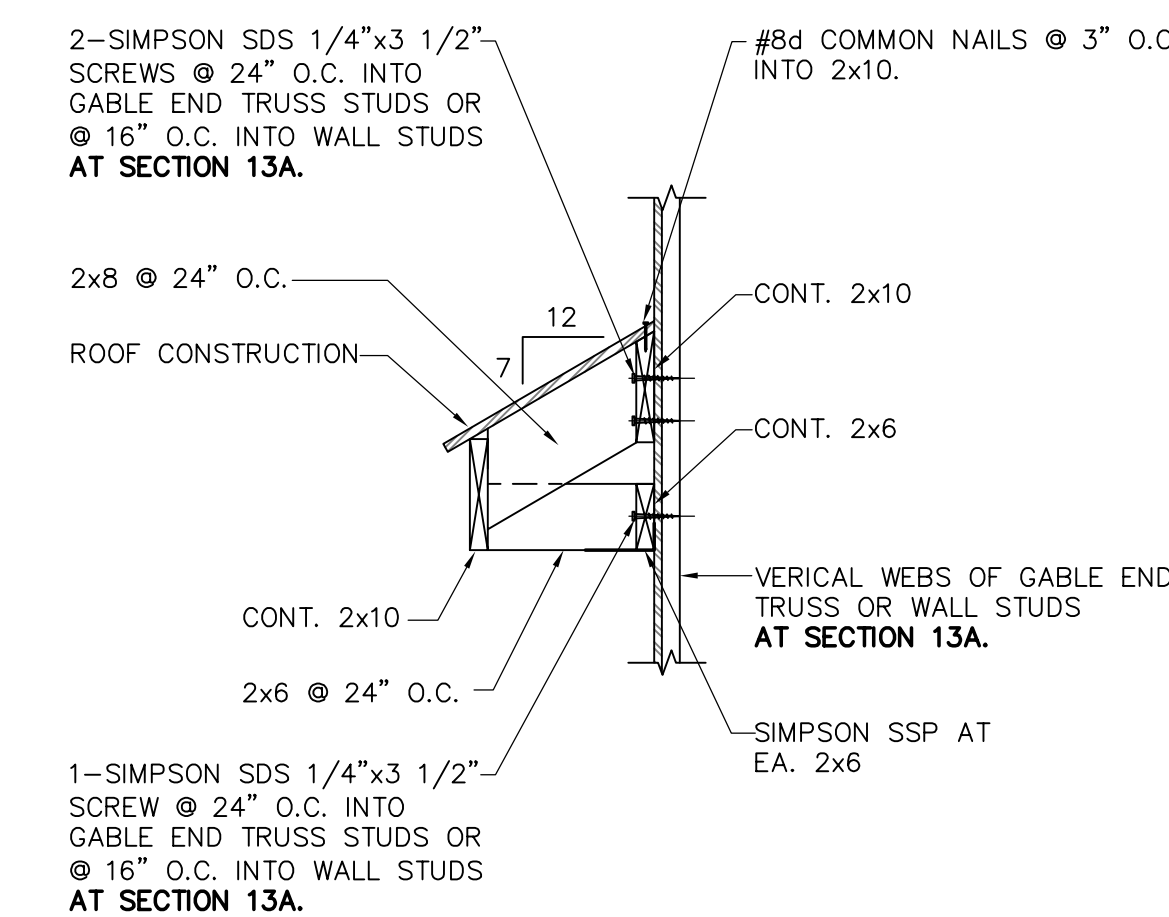
SECTION 10  
3/4" = 1'-0"



SECTION 11  
3/4" = 1'-0"



SECTION 12  
3/4" = 1'-0"



SECTION 13 (13A)  
3/4" = 1'-0"

NOTE: FULLY SHEATH MAIN ROOF TRUSSES BEFORE INSTALLING VALLEY TRUSS.