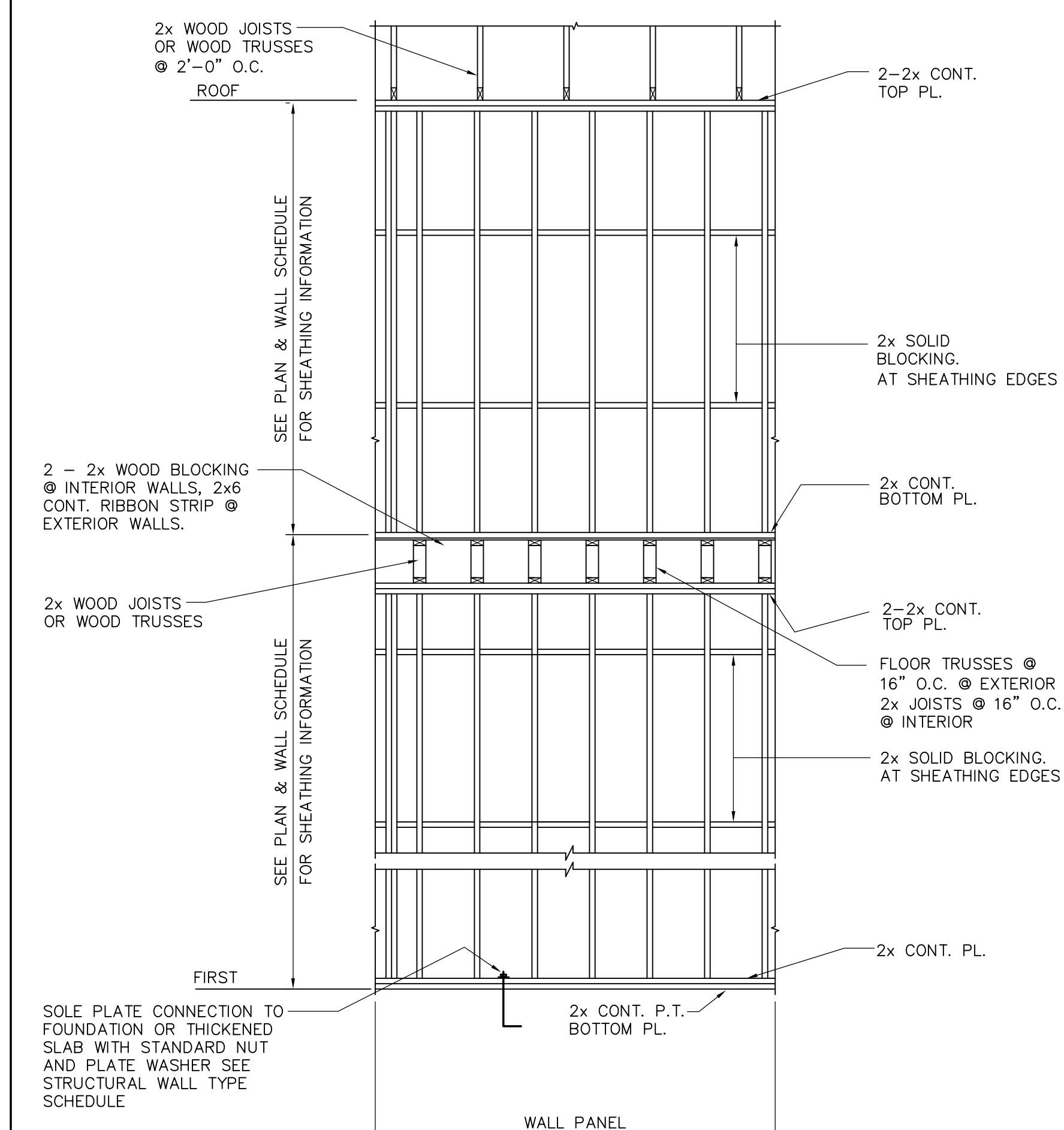


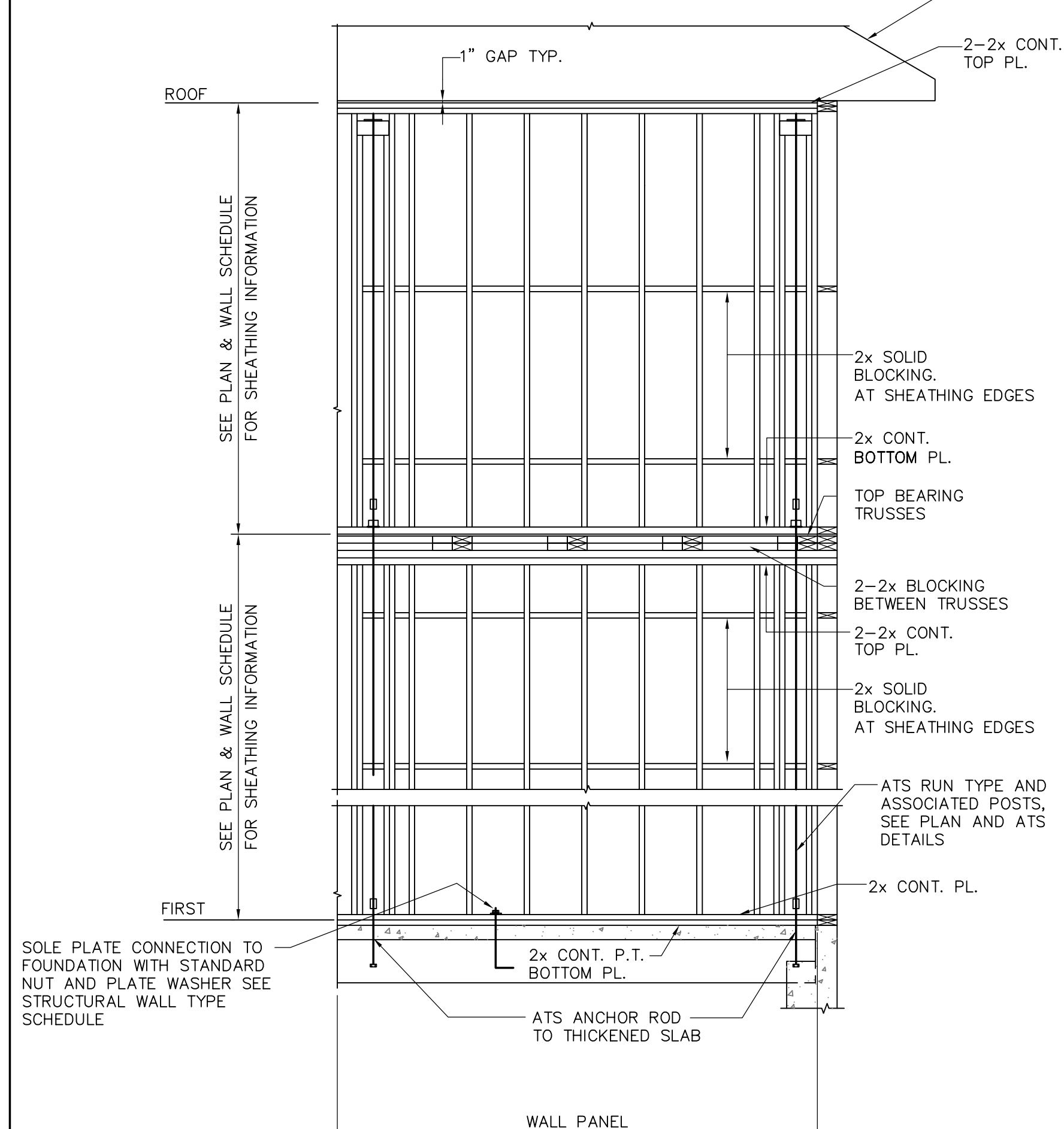
CONDITION AT FOUNDATION
TYPICAL EXTERIOR NON-BEARING & SHEAR WALL ELEVATION

NOTE:
 1. SEE WALL LEGENDS ON EACH PLAN FOR STUD SIZE AND SPACING.



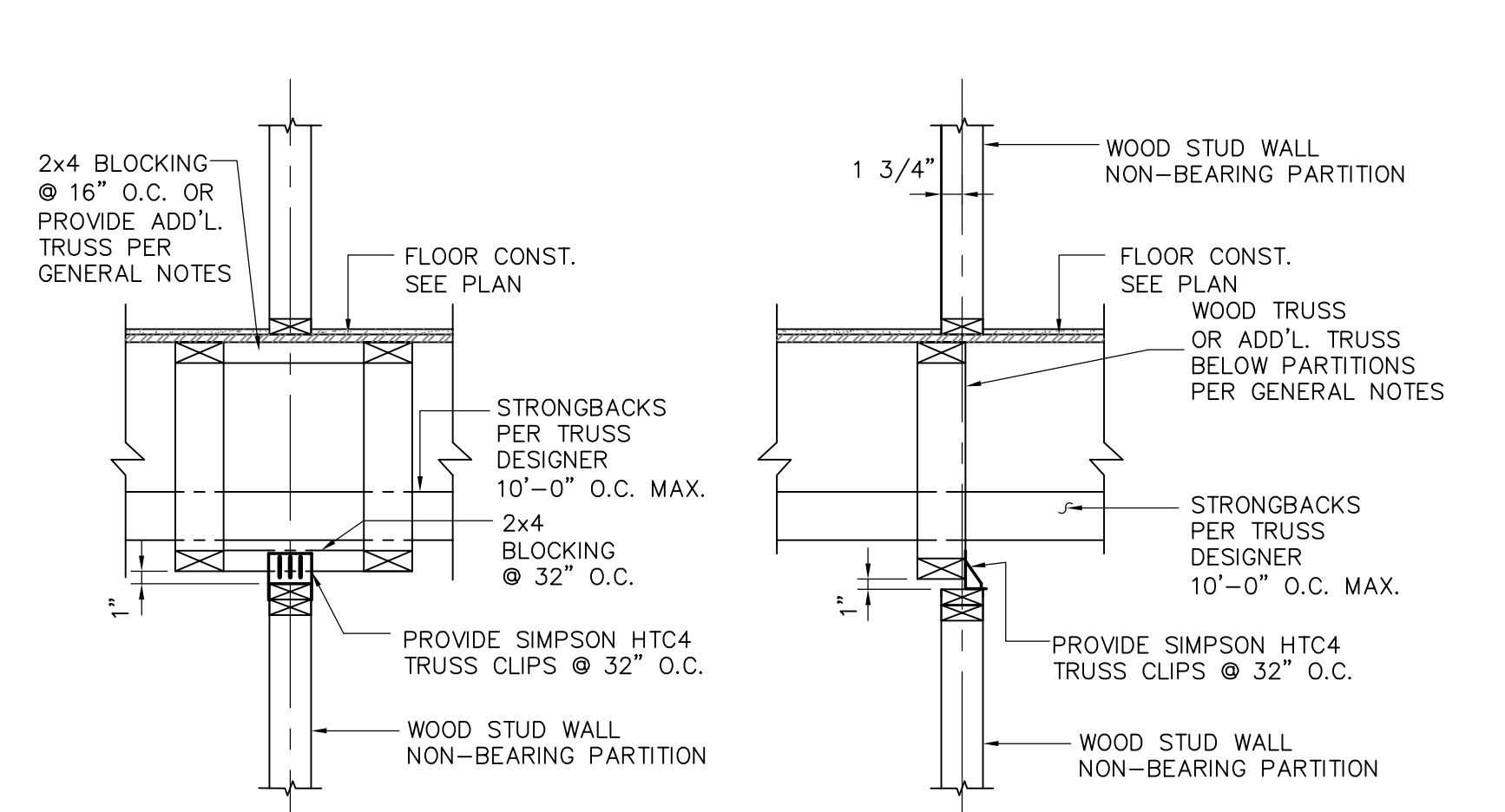
CONDITION AT FOUNDATION OR THICKENED SLAB
TYPICAL EXTERIOR AND INTERIOR SHEAR & BEARING WALL ELEVATION

NOTE:
 1. SEE WALL LEGENDS ON EACH PLAN FOR STUD SIZE AND SPACING.

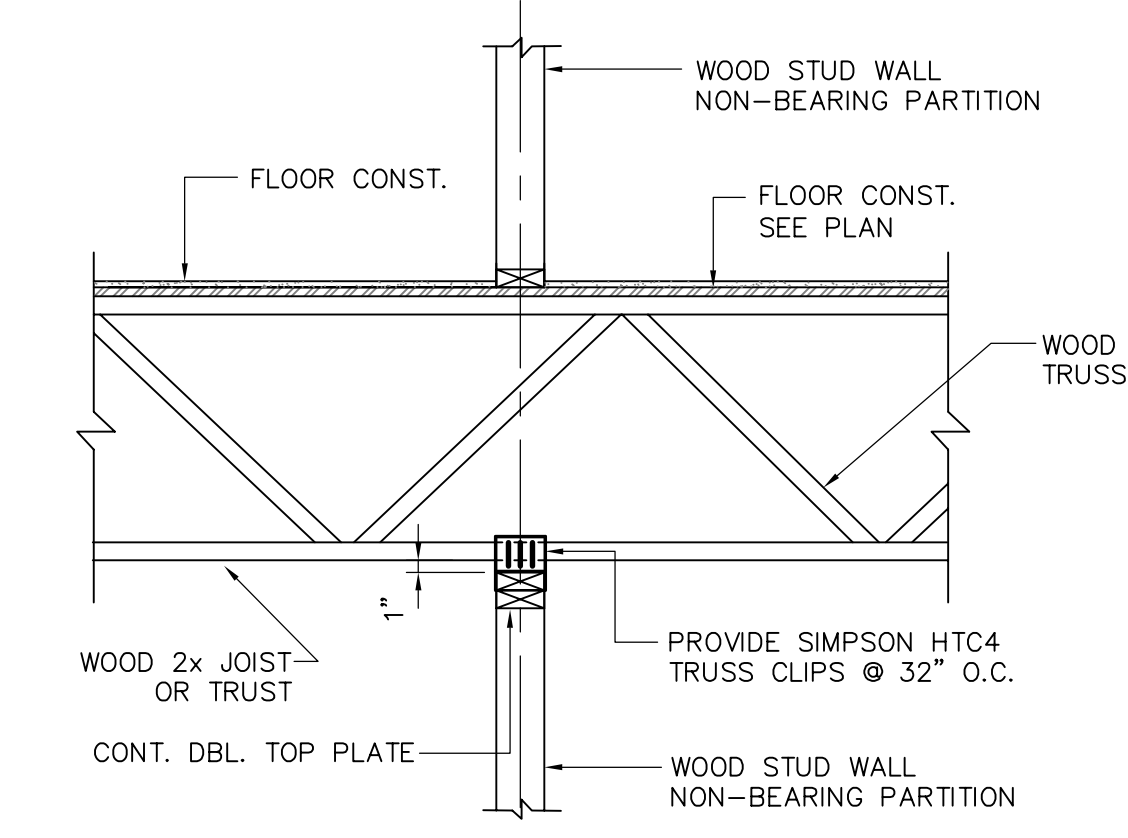


CONDITION AT THICKENED SLAB
TYPICAL INTERIOR NON-BEARING SHEAR WALL ELEVATION

NOTES:
 1. SEE WALL LEGENDS ON EACH PLAN FOR STUD SIZE AND SPACING.
 2. REFER TO SIMPSON ANCHOR TIE DOWN SYSTEM DETAILS.



PARTITIONS PARALLEL TO TRUSSES
 (SIMILAR BELOW ROOF TRUSSES)



PERPENDICULAR TO TRUSSES
 (SIMILAR BELOW ROOF TRUSSES)

TYPICAL FRAMING AT WOOD STUD NON-BEARING PARTITIONS
 (REFER TO ARCH. DWGS. FOR WALL LOCATIONS)

1
 S2.5

2
 S2.5

3
 S2.5

4
 S2.5

STRUCTURAL WALL TYPE SCHEDULE							
WALL TYPE	BLOCKING OF PANEL EDGES (SEE NOTE 3)	SHEATHING THICKNESS AND TYPE (SEE NOTE 1)	NUMBER OF SIDES SHEATHING OCCURS	PANEL EDGE NAIL SIZE (SEE NOTE 2)	PANEL EDGE NAIL SPACING	SOLE PLATE CONN. TO FNDN. (PRE-INSTALLED) BOLT DIA. & SPACING (SEE NOTES 5, 6, & 7)	SOLE PLATE CONN. TO TOP PLATE, JOIST, OR BLOCKING BELOW WITH 16d COMMON NAILS
A	BLOCKED	15/32" PLYWOOD OR OSB	1	8d COMMON	6" O.C.	5/8" @ 48"	1 ROW @ 8" O.C.
B	BLOCKED	15/32" PLYWOOD OR OSB	1	8d COMMON	4" O.C.	5/8" @ 48"	2 ROWS @ 12" O.C.
C	BLOCKED	15/32" PLYWOOD OR OSB	1	8d COMMON	3" O.C.	7/8" @ 48" OR 5/8" @ 32"	2 ROWS @ 8" O.C.
D	BLOCKED	15/32" PLYWOOD OR OSB	2	8d COMMON	4" O.C.	7/8" @ 48" OR 5/8" @ 24"	2 ROWS @ 6" O.C.
E	BLOCKED	15/32" PLYWOOD OR OSB	2	8d COMMON	3" O.C.	7/8" @ 32"	2 ROWS @ 4" O.C.
F	BLOCKED (SEE NOTE 4)	15/32" PLYWOOD OR OSB	2	10d COMMON	3" O.C.	7/8" @ 16"	2 ROWS @ 4" O.C.
G	UNBLOCKED	1/2" MIN. G.W.B.	2	5d COOLER OR #6x1 1/4" DRYWALL SCREW	6" O.C.	5/8" @ 48"	1 ROW @ 8" O.C.
H	BLOCKED	5/8" G.W.B.	2	6d COOLER OR #6x1 5/8" DRYWALL SCREW	6" O.C.	5/8" @ 48"	1 ROW @ 8" O.C.
J	BLOCKED	5/8" G.W.B.	2	6d COOLER OR #6x1 5/8" DRYWALL SCREW	4" O.C.	5/8" @ 48"	2 ROWS @ 12" O.C.

WALL TYPE SCHEDULE NOTES:

- MINIMUM SHEATHING THICKNESS SHOWN.
- SEE GENERAL NOTES FOR ADDITIONAL PANEL NAILING REQUIREMENTS.
- BLOCKING FOR FULL HEIGHT PANELS ONLY. NO BLOCKING AT PANEL EDGES REQ'D OVER DOORS AND WINDOWS.
- PANEL EDGES MUST BE SUPPORTED ON 4x STUDS AND BLOCKING AND NAILS MUST BE STAGGERED.
- FOR PRE-INSTALLED ANCHOR BOLTS TO FOUNDATION PROVIDE A307 HOOKED ANCHOR BOLTS WITH EMBEDDED LENGTHS OF 6" FOR 5/8" AND 8" FOR 7/8".
- FOR POST-INSTALLED ANCHORS TO FOUNDATION PROVIDE A307 THREADED ROD OF THE DIAM. AND SPACING SHOWN, ANCHORED WITH SIMPSON ACRYLIC-TIE ADHESIVE WITH A MINIMUM EMBEDMENT OF 5" FOR 5/8" AND 6 1/4" FOR 7/8" RODS.
- ALTERNATE FOR 5/8" POST-INSTALLED ANCHORS INTO INTERIOR THICKENED SLABS, PROVIDE HILTI KWIK BOLTS OF THE DIAMETER AND SPACING SHOWN WITH A MINIMUM EMBEDMENT OF 4".
- G.W.B. INDICATES GYPSUM WALL BOARD.

5
 S2.5

Lynnfield Commons Unknown Street Lynnfield, Massachusetts		TYPICAL DETAILS	
Russell Scott Steedle & Capone Architects Inc. 18 Brattle Street Cambridge Massachusetts 02138 • 617-661-5880 Fax 661-0613		Date: 08/31/07	07162
DM Berg Consultants P.C. Structural Engineers 370 Hillside Ave. Needham Massachusetts 02464 • 781-444-5156 Fax 444-5157		Date: 09/14/07	S2.5
		Scale: NONE	