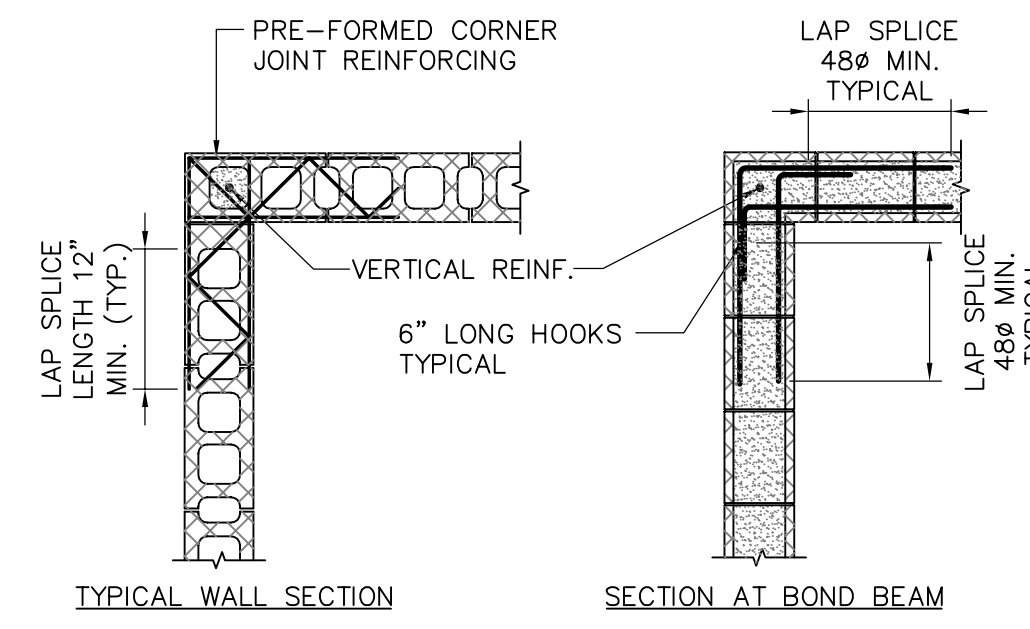


- NOTES:**
1. POSITION VERTICAL REINFORCING AT END LOCATIONS FIRST (I.E., CORNERS, INTERSECTIONS OF REINFORCED MASONRY WALLS, AND JAMBS OF OPENINGS LARGER THAN 2 FEET IN EITHER DIRECTION). SPACE INTERMEDIATE VERTICAL REINFORCING BETWEEN THESE PRIMARY BARS AT A SPACING NOT TO EXCEED THE MAXIMUM SPECIFIED FOR THE WALL.
  2. JAMB, AND SILL REINFORCING BARS ARE REQUIRED FOR OPENINGS WHICH EXCEED 2 FEET IN EITHER DIRECTION. SMALLER OPENINGS (≤2 FEET) IN BOTH DIRECTIONS DO NOT REQUIRE ADDITIONAL REINFORCING AROUND THEM.
  3. COORDINATE WITH THE ARCHITECTURAL, MECHANICAL, ELECTRICAL, PLUMBING, FIRE PROTECTION, KITCHEN, AND EQUIPMENT CONTRACT DRAWINGS FOR OPENINGS AND OTHER INFORMATION NOT SHOWN IN THE STRUCTURAL CONTRACT DRAWINGS.
  4. SEE MASONRY CORNER REINFORCING DETAIL.
  5. SEE MASONRY OPENING JAMB REINFORCING DETAIL.
  6. SEE MASONRY OPENING HEAD/SILL REINFORCING DETAIL.
  7. SEE MASONRY INTERSECTION REINFORCING DETAIL.
  8. SEE BOND BEAM LINTEL SCHEDULE.
  9. ALL CLEAN-OUT AND GROUTING PROCEDURES SHALL CONFORM TO ACI 530.1-95/ ASCE 6-95/ TMS 602-95, SECTIONS 3.2 AND 3.5.
  10. LAP BOND BEAM REINFORCING 48 DIAMETERS.
  11. #6 DIAMETERS INTO MASONRY, DEVELOPMENT LENGTH OR STD. HOOK (IF REQUIRED) INTO CONCRETE.

**MASONRY REINFORCING LAYOUT**

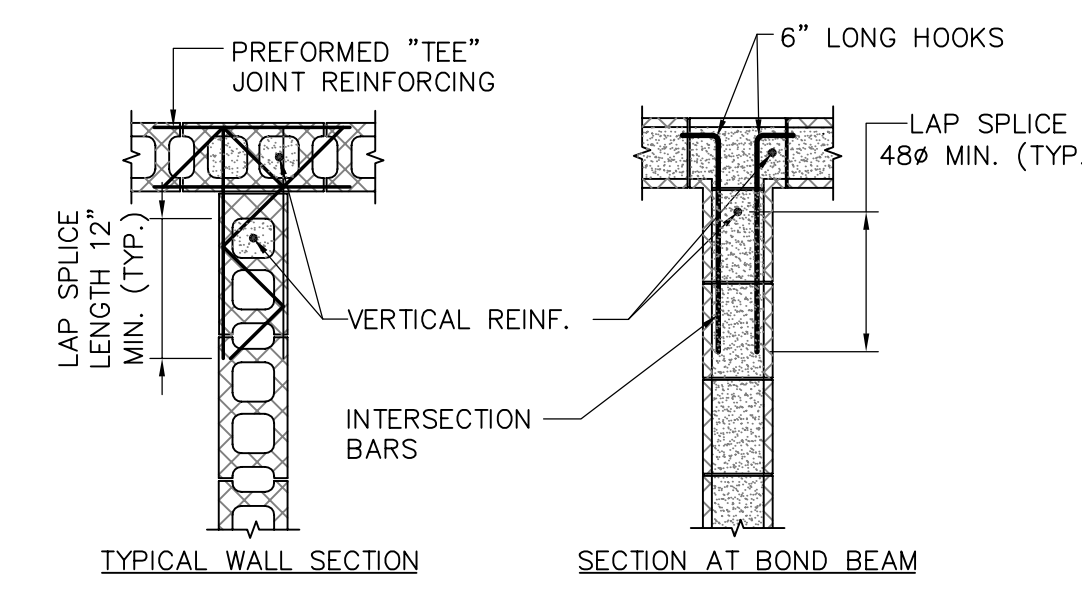
1  
S2.3



- NOTES:**
1. SIZE OF CORNER BARS TO MATCH BOND BEAM REINFORCING.
  2. NORMAL JOINT AND BOND BEAM REINFORCING NOT SHOWN FOR CLARITY.
  3. VERTICAL REINFORCING TO EXTEND CONTINUOUSLY THROUGH BOND BEAMS. LAP VERTICALS 48 DIAMETERS ABOVE BOND BEAMS.

**MASONRY CORNER REINFORCING DETAIL**

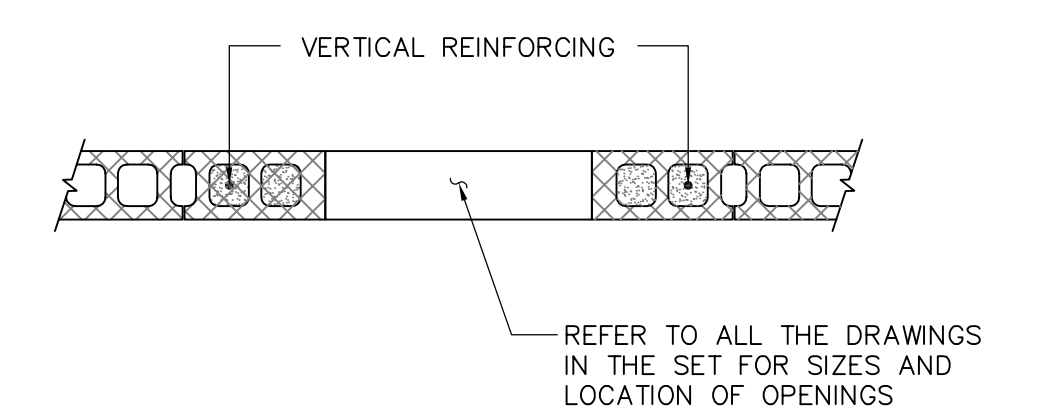
2  
S2.3



- NOTES:**
1. SIZE OF INTERSECTION BARS TO MATCH BOND BEAM REINFORCING.
  2. NORMAL JOINT AND BOND BEAM REINFORCING NOT SHOWN FOR CLARITY.
  3. VERTICAL REINFORCING TO EXTEND CONTINUOUSLY THROUGH BOND BEAMS. LAP VERTICALS 48 DIAMETERS ABOVE BOND BEAMS.

**MASONRY INTERSECTION REINFORCING DETAIL**

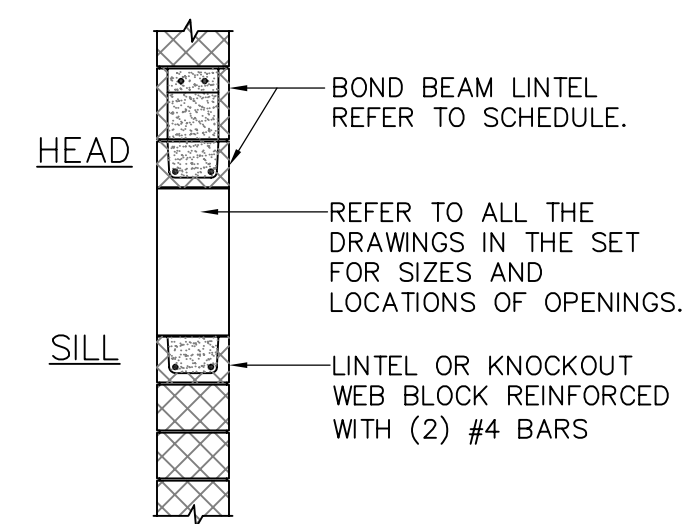
3  
S2.3



- NOTES:**
1. GROUT THE TWO CELLS ADJACENT TO OPENING SOLID TO UNDERSIDE OF LINTEL ABOVE.
  2. INSTALL VERTICAL REINFORCING IN END CELL AWAY FROM OPENING.
  3. VERTICAL REINFORCING TO EXTEND CONTINUOUSLY THROUGH BOND BEAMS. LAP VERTICALS 48 DIAMETERS ABOVE BOND BEAMS.

**MASONRY OPENING JAMB REINFORCING DETAIL**

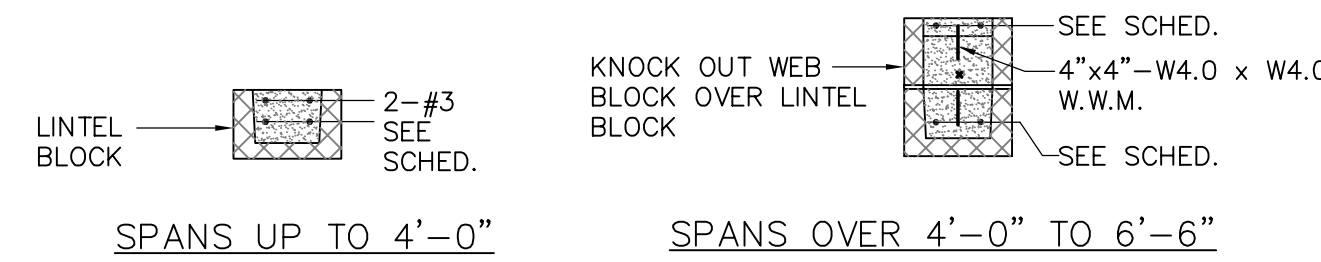
4  
S2.3



**MASONRY OPENING HEAD/SILL REINFORCING DETAIL**

5  
S2.3

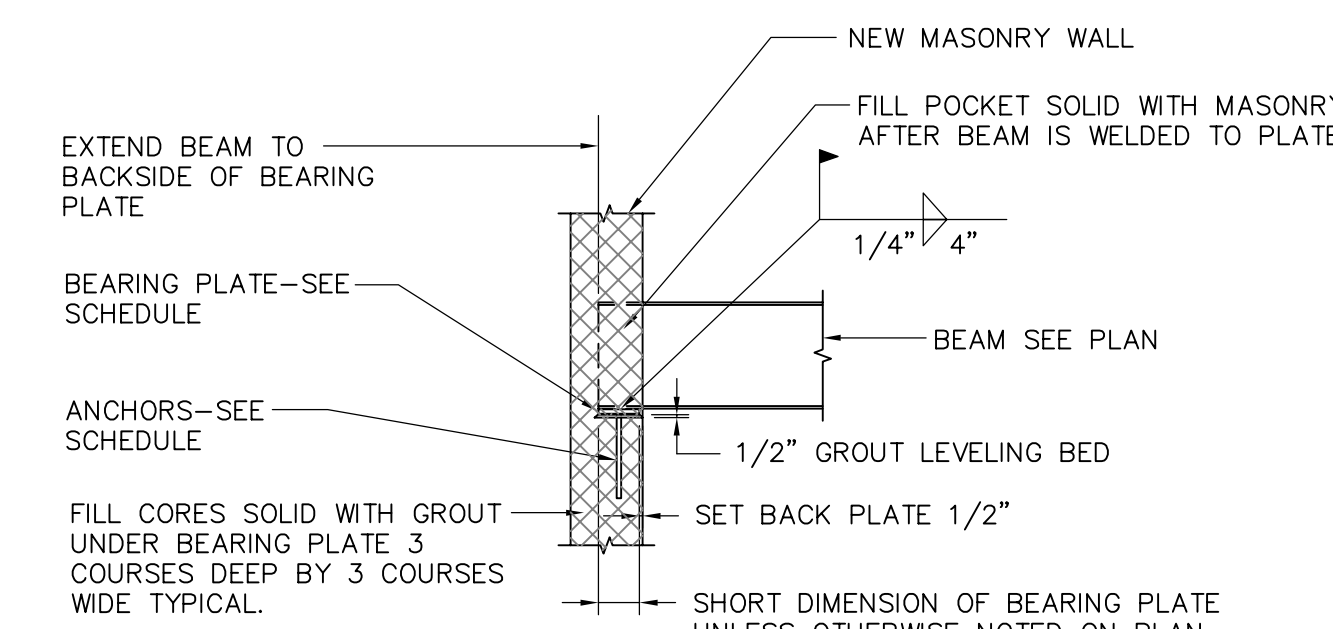
CLEAR SPAN	REINFORCING IN LINTELS			END BEARING
	6" WALL	8" WALL	12" WALL	
≤ 2'-0"	1-#5	2-#4	2-#4	8"
≤ 3'-0"	1-#5	2-#4	2-#5	8"
≤ 4'-0"	2-#4	2-#5	2-#6	16"
≤ 5'-0"	2-#5	2-#5	2-#6	16"
≤ 6'-6"	2-#5	2-#6	2-#6	16"



- NOTES:**
1. LINTELS SHALL BE SHORED AND GROUTED SOLID FULL LENGTH. GROUT  $f'_c = 3000$  PSI MINIMUM. SHORING SHALL REMAIN IN PLACE FOR 14 DAYS OR UNTIL GROUT HAS ATTAINED A COMPRESSIVE STRENGTH OF 3000 PSI MINIMUM VERIFIED THROUGH TESTING, WHICHEVER IS LONGER.
  2. NO LAP SPLICES ALLOWED WITHIN CLEAR SPAN OR END BEARING LENGTH.
  3. THE TABULATED VALUES ARE BASED ON CONCRETE MASONRY UNIT WITH A NET AREA COMPRESSIVE STRENGTH OF 2800 PSI AS DETERMINED BY ASTM C140 YIELDING A PRISM STRENGTH ( $f_m$ ) OF 2000 PSI MINIMUM.

**REINFORCED BOND BEAM LINTELS FOR CMU WALLS**

6  
S2.3

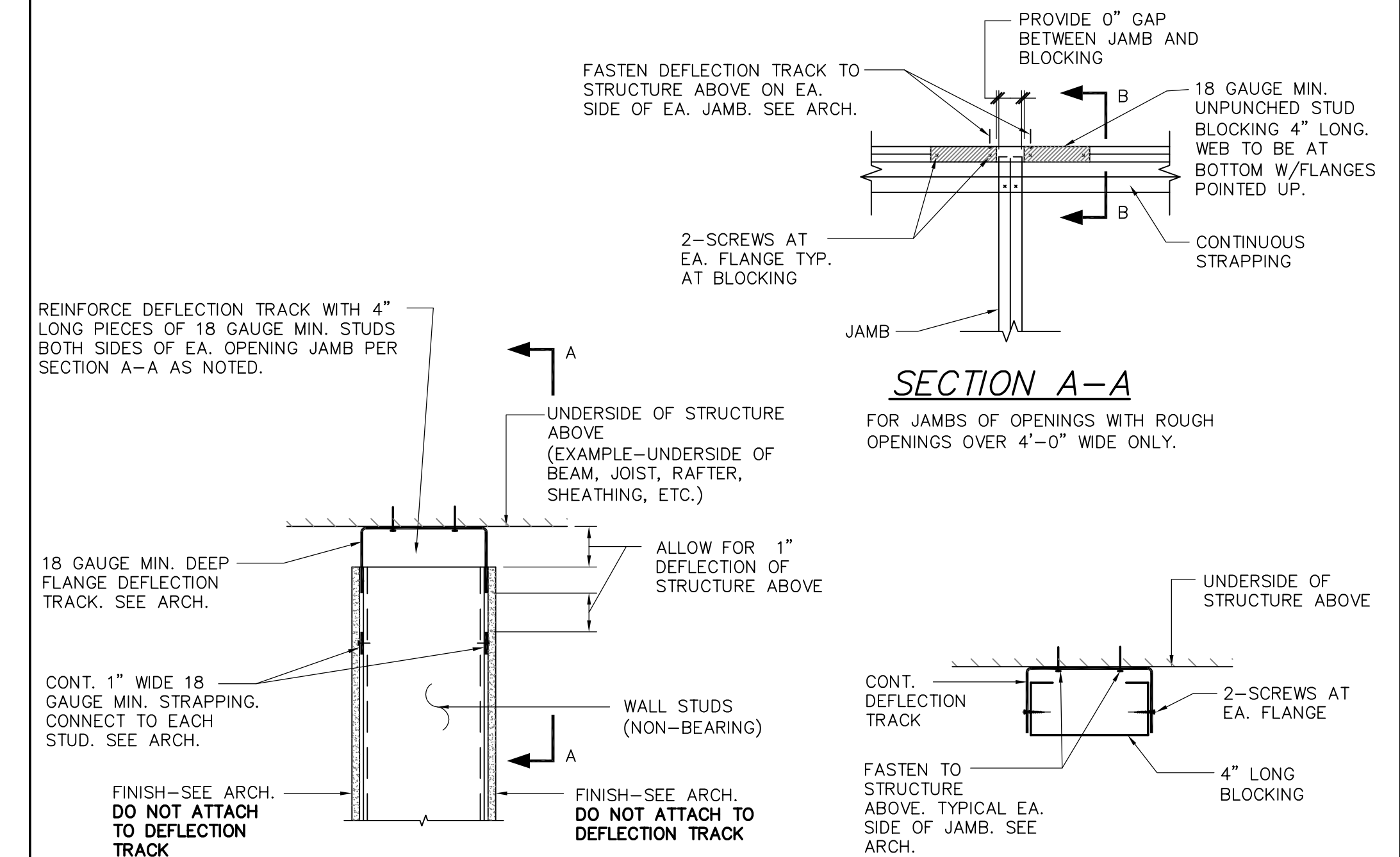


- NOTE:**
1. MASONRY REINFORCING NOT SHOWN FOR CLARITY.

MARK	BEARING PLATE SIZE	ANCHORS (FLOOR)	ANCHORS (ROOF)
BP-1	1/2" x 5" x 0'-8"	2-3/4"x8" LONG HEADED STUDS	2-#4x15" LONG REINF. BAR STUDS
BP-2			

**BEAM BEARING ON MASONRY DETAIL**

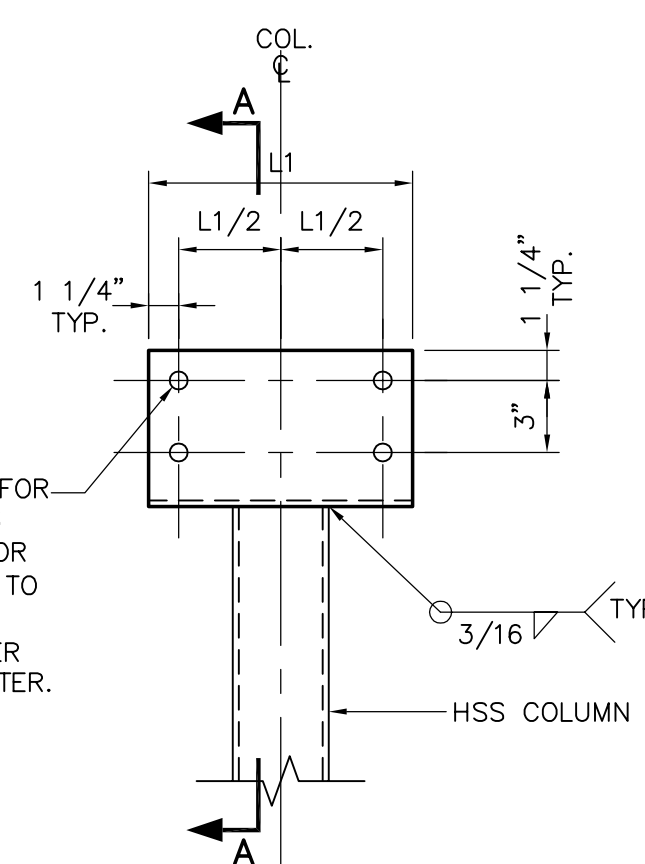
7  
S2.3



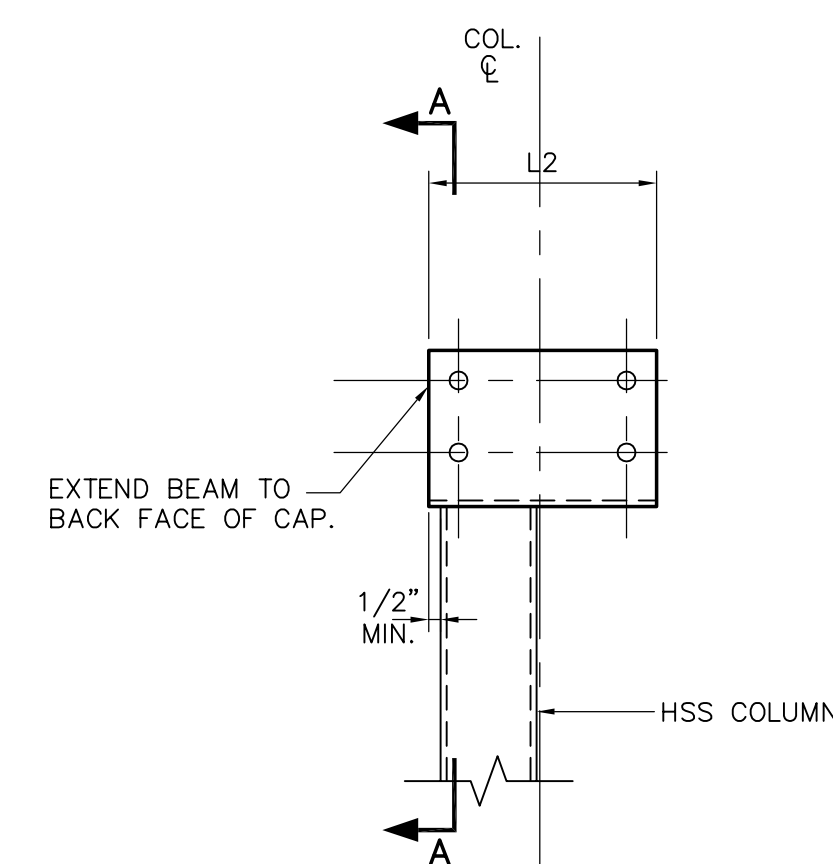
- NOTES:**
1. DO NOT ATTACH DEFLECTION TRACK TO WALL STUDS.

**INTERIOR NON-BEARING METAL STUD WALL DEFLECTION TRACK DETAIL**

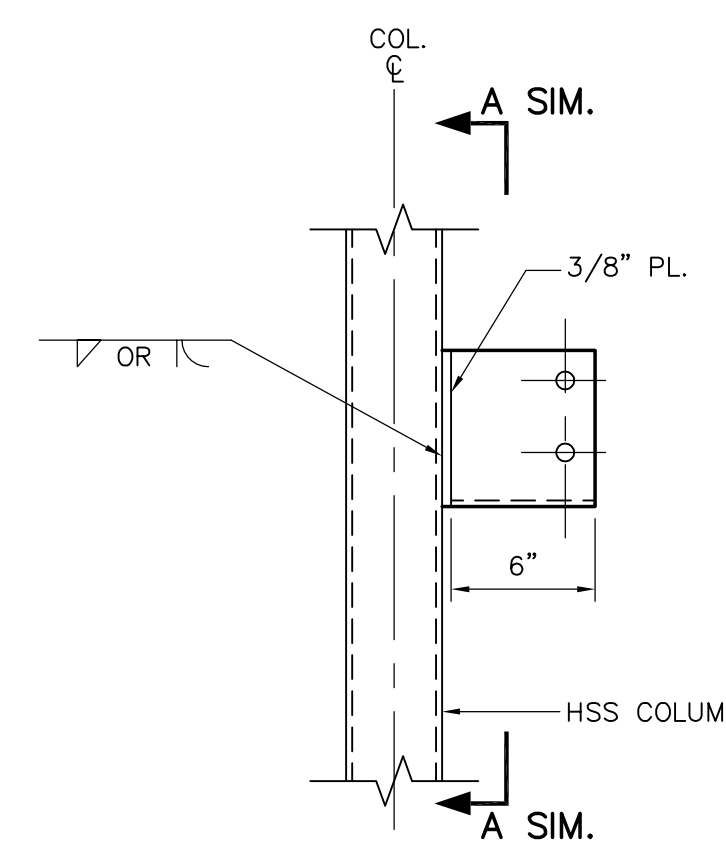
8  
S2.3



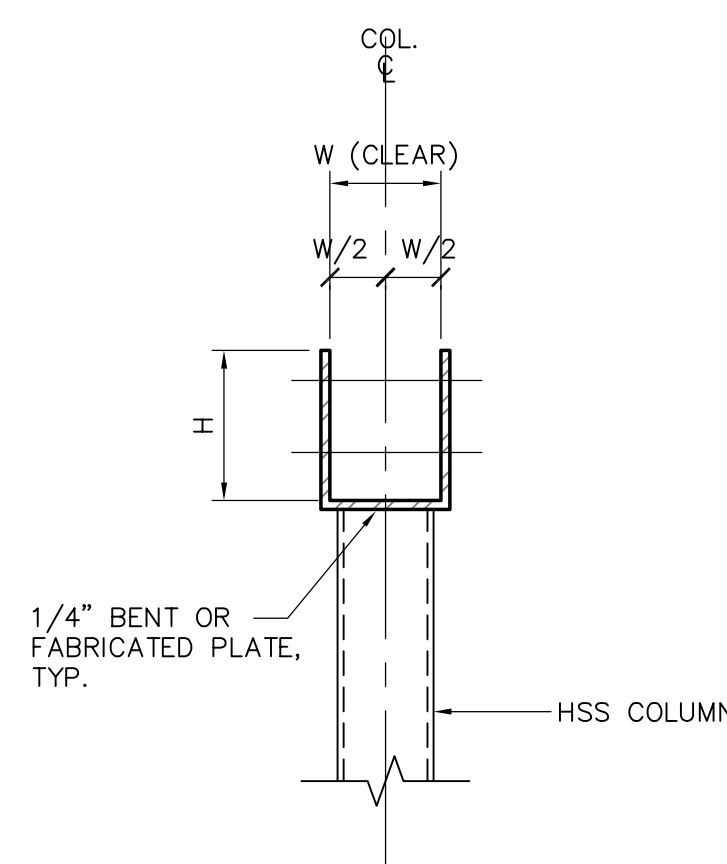
**BEAMS SPANNING BOTH WAYS FROM COLUMN**



**BEAM STOPPING AT COLUMN**



**BEAM SEAT FOR COLUMN EXTENDING PAST BEAM**



**SECTION A-A**

COLUMN CAP SCHEDULE					
BEAM TYPE	W	L1	L2	H	BOLT DIA.
2-2x	3 1/8"	11"	9 1/2"	6 1/2"	5/8"
4x, 2-LVL & 3 1/2" WIDE PARALLAM	3 5/8"	11"	9 1/2"	6 1/2"	5/8"
3-2x	4 5/8"	11"	9 1/2"	6 1/2"	5/8"
3-LVL & 5 1/4" WIDE PARALLAM	5 3/8"	13"	10 1/2"	8"	3/4"
6x	5 5/8"	11"	9 1/2"	6 1/2"	5/8"
4-LVL & 7" WIDE PARALLAM	7 1/8"	13"	10 1/2"	8"	3/4"
8x	7 5/8"	13"	10 1/2"	8"	3/4"

**COLUMN CAPS AND BEAM SEATS FOR STEEL HSS COLUMNS SUPPORTING WOOD BEAMS**

9  
S2.3

Lynnfield Commons  
Unknown Street  
Lynnfield, Massachusetts

Russell Scott Steedle & Capone Architects Inc.  
18 Brattle Street Cambridge Massachusetts 02138 • 617-661-5880 Fax 661-0613

DM Berg Consultants P.C. Structural Engineers  
370 Hillside Ave. Needham Massachusetts 02464 • 781-444-5156 Fax 444-5157

**TYPICAL DETAILS**

Date: 08/31/07  
09/14/07

07152  
S2.3

Scale: NONE