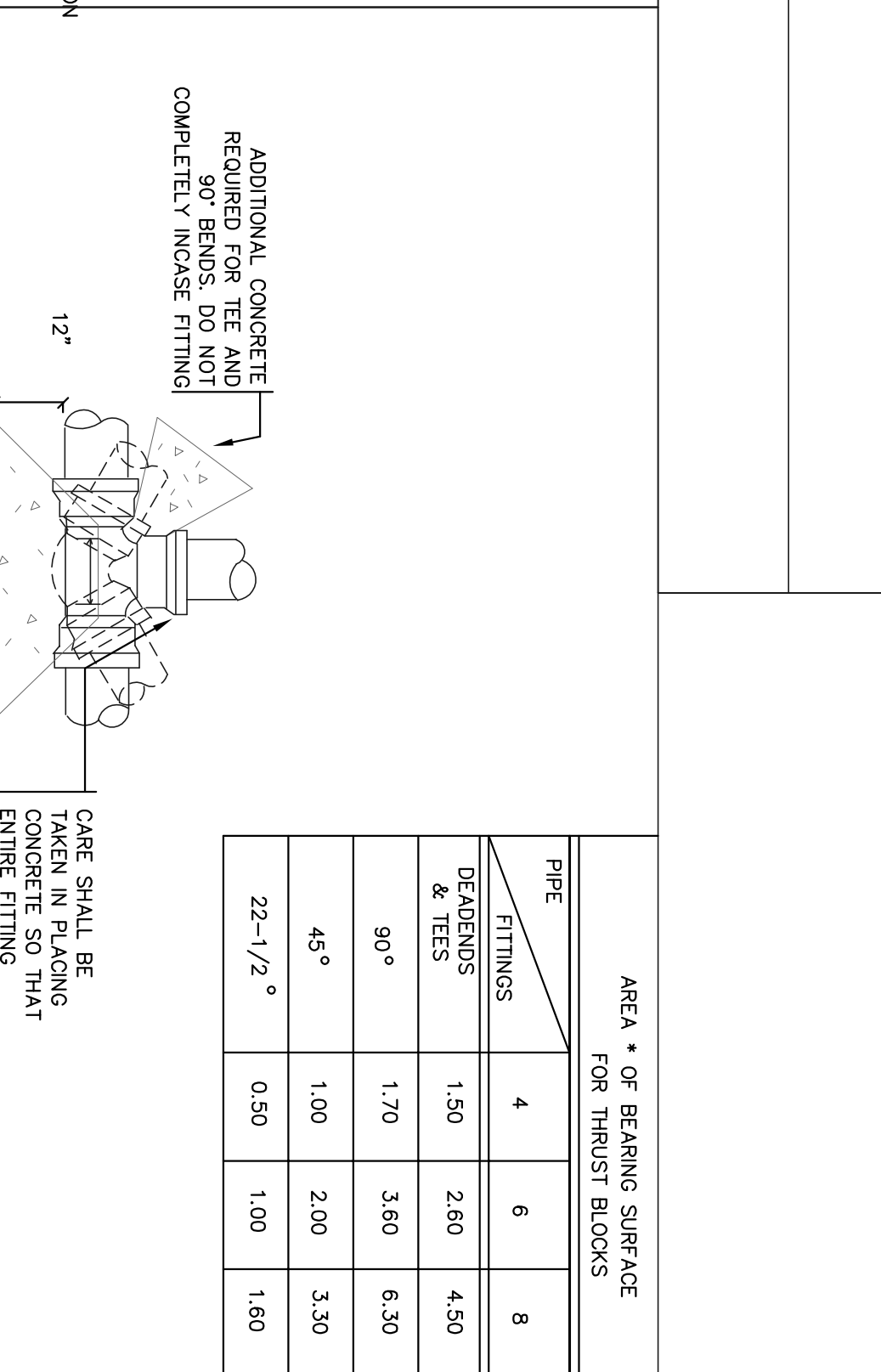
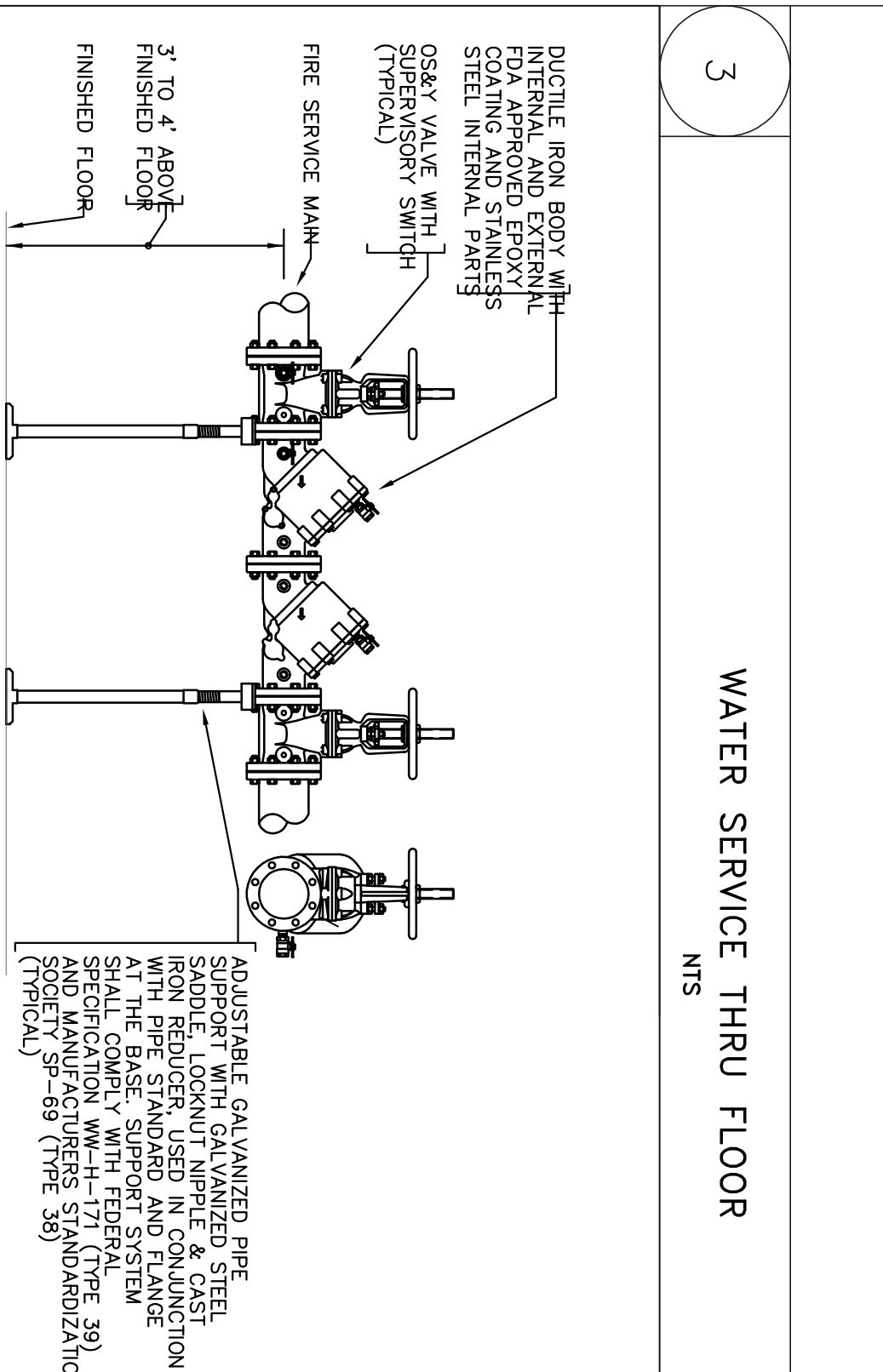
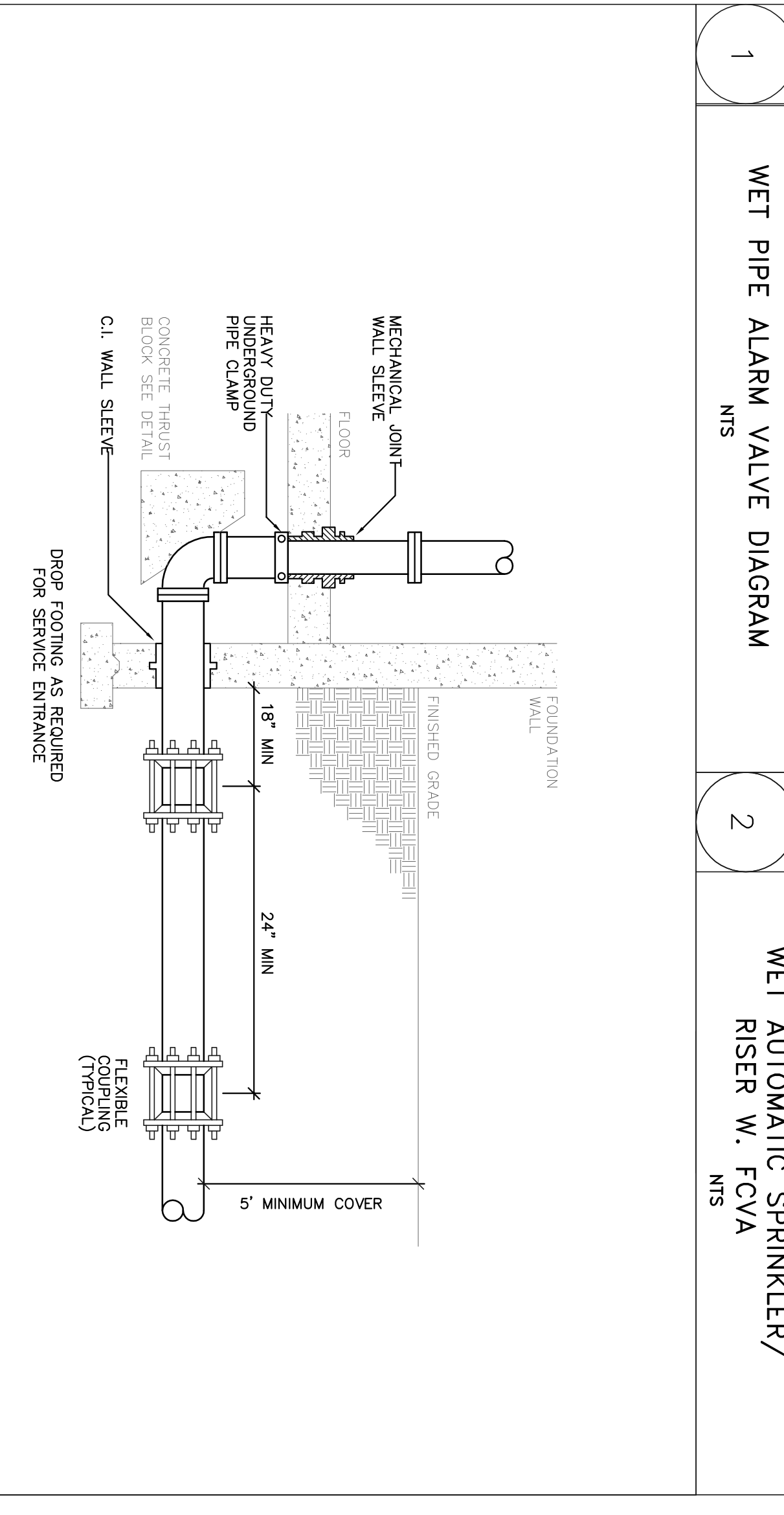
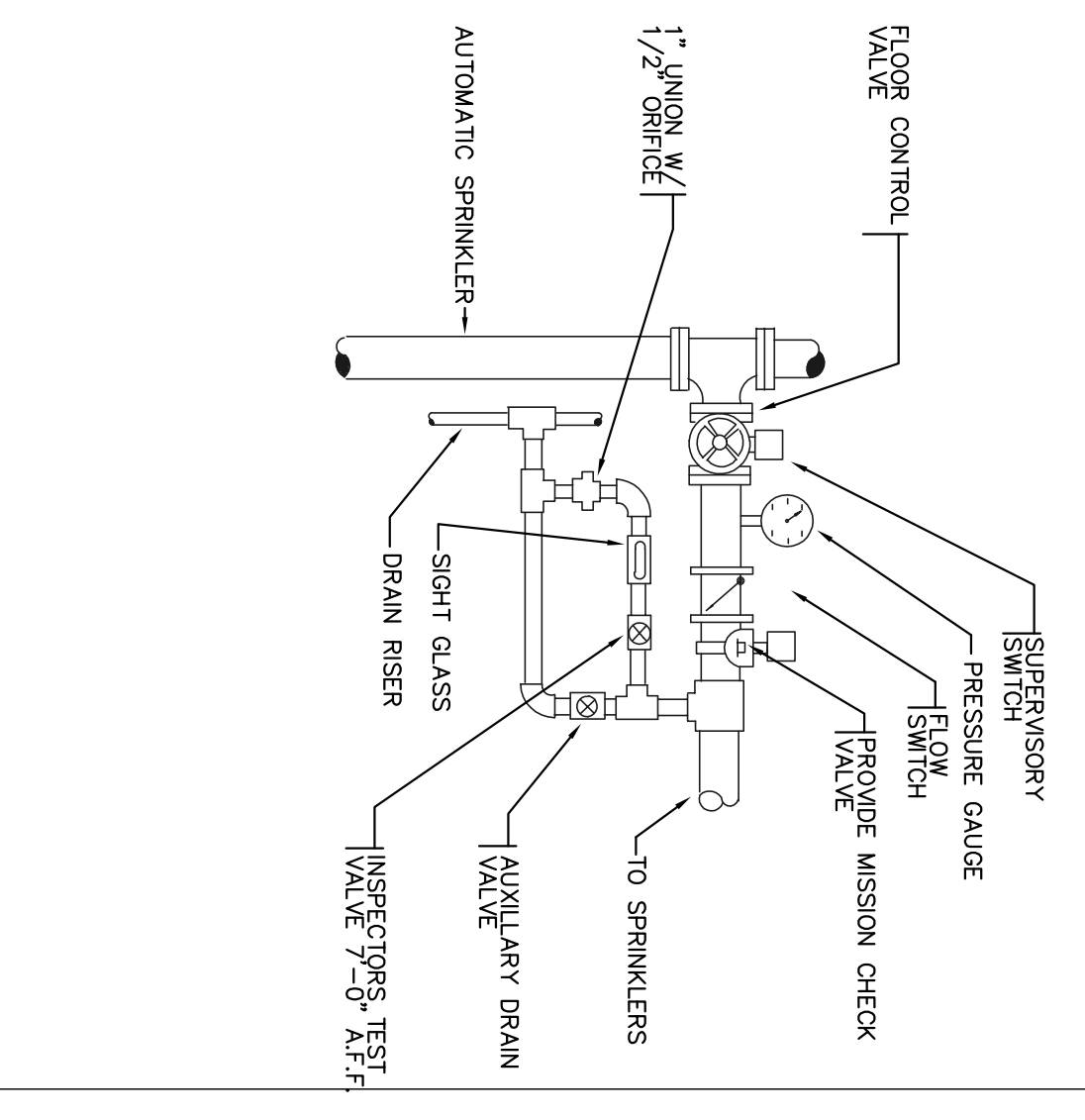
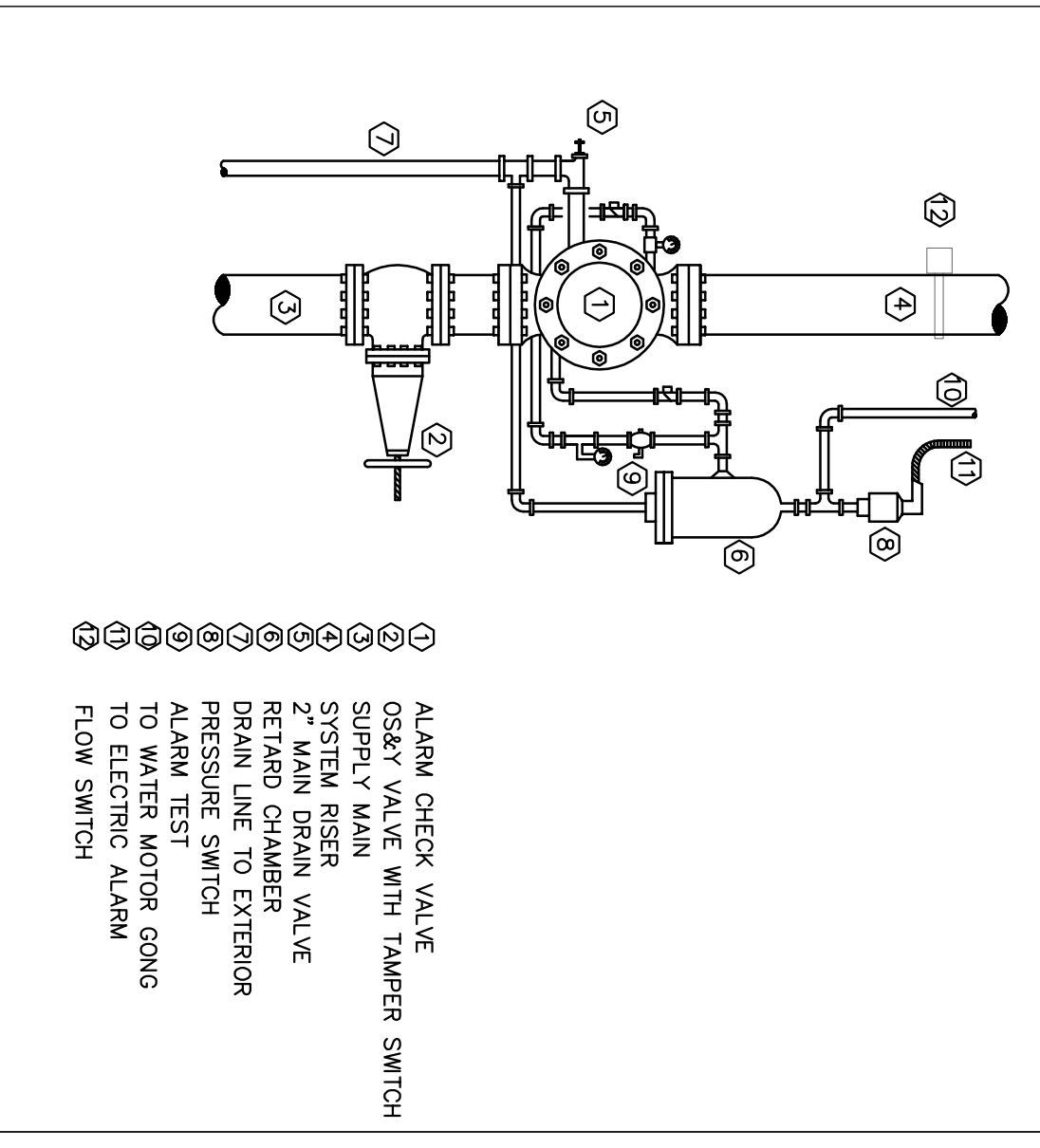
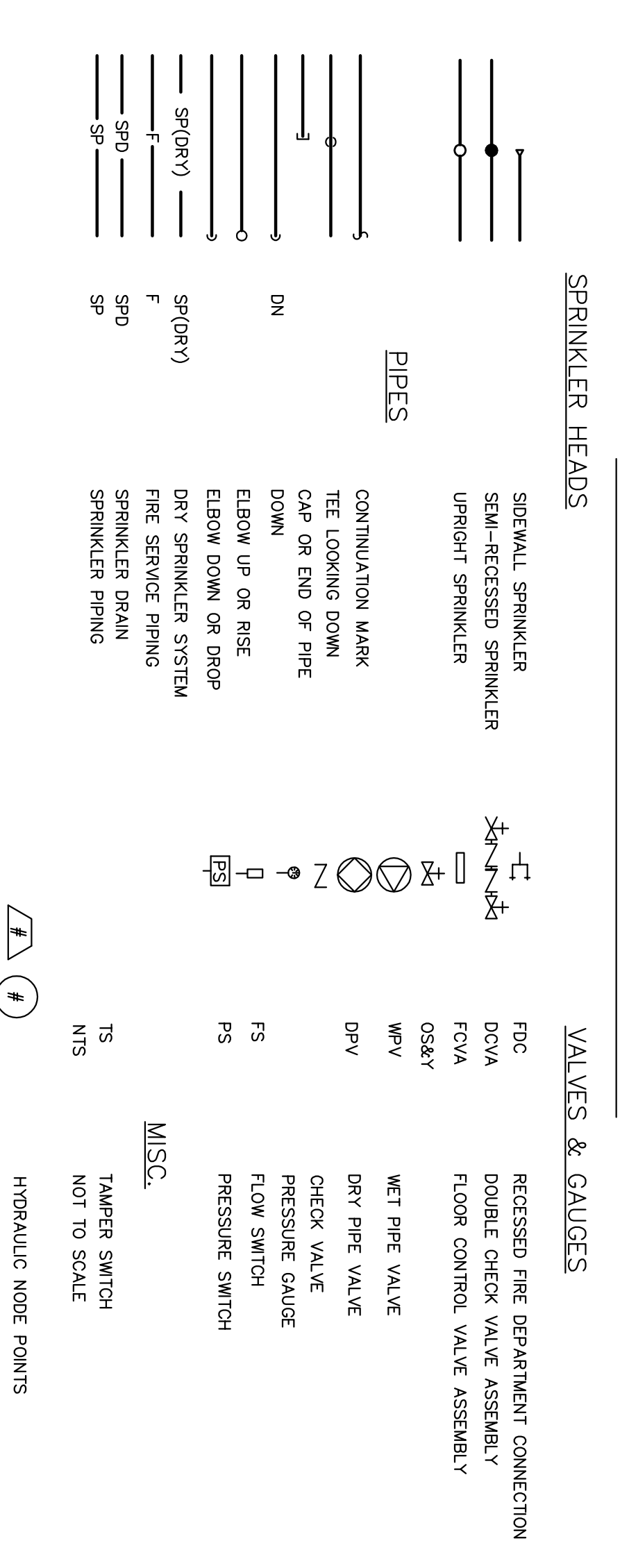


# FIRE PROTECTION LEGEND



AREA \* OF BEARING SURFACE FOR THRUST BLOCKS

PIPE FITTINGS	4	6	8
DIAMETERS & TEES	1.50	2.60	4.50
90°	1.70	3.60	6.30
45°	1.00	2.00	3.30
22-1/2°	0.50	1.00	1.60

**NOTES:**

- DOUBLE CHECK VALVES SHALL BE APPROVED BY THE DEPARTMENT OF ENVIRONMENTAL PROTECTION AGENCY.
- DOUBLE CHECK VALVES SHALL BE IN COMPLETE ACCORDANCE WITH AUTHORITIES HAVING JURISDICTION, INSTALLATION.
- THIS CONTRACTOR SHALL NOTIFY THE OWNER'S AGENT IN WRITING FOR APPROVAL FROM ALL LOCAL AND STATE AUTHORITIES.
- SEE FLOOR PLANS FOR SIZES, SPECS, AND APPLICATIONS REQUIRED FOR APPROVAL AND PAY ALL FEES.
- MAINTAIN 1'-0" CLEARANCE FROM WALL.

**NOTE:**

- FITTING BELL ENDS SHALL BE COMPLETELY INCASE FITTING.
- WHERE ADJUSTABLE BEARING CAN NOT BE OBTAINED PROVIDE THE ROOF IN LIEU OF THRUST BLOCKS.

\* SQUARE CONFIGURATION PREFERRED HOWEVER AT CONTRACTOR'S OPTION, PROVIDE RECTANGULAR THRUST BLOCK OF EQUAL CROSS SECTIONAL AREA.